

TK SORG'S

EAT! DRINK! BRAND!™

TKCups-Sorgs.com
A Division of Gemini Industries LLC

PPAIUPIC: TKSORGS

ASI#88200

PPAIUPIC: TKSORGS

ASI#88200



EAT! DRINK! BRAND!

We look forward to serving you with exceptional customized promotional products! See our broad range of options including custom printed napkins, cups, plates, coffee sleeves, coasters, key tags, beverage insulators, air fresheners, magnets, yard signs and much more.

INFORMATION SECTION I

Print Programs.....	1
Eco-Friendly Information	2
Quick Shipping.....	3

NAPKINS

Linen-Esque® Napkins	4-5
3-Ply Napkins	6-7
2-Ply Napkins	8-9
1-Ply Napkins	10-11
Colored Napkins	12-13

CUPS

White Stadium Cups	14-15
Translucent, Mood, & Colored	16-17
Stadium Cups	
Clear Soft Sided Plastic Cups	18-19
EasyLine Plastic Cups	20-21
Translucent Soft Sided Plastic Cups	22-23
Sampling Items	24-25
Hard Sided Cups, Tumblers,	26-27
& Stemware	
Frost Flex Tumblers	28-29
Keepsake Collection	30-31
Compostable Paper Hot Cups.....	32-33
Paper Hot Cups	34-35
Coffee Cup Sleeves & Double Wall.....	36-37
Insulated Cups	
Foam Cups	38-39
Insulated Coffee and Party Tumblers	50

COASTERS

Coasters	40-43
----------------	-------

PLATES

Compostable Paper Plates.....	32-33
Plastic Plates	44-45
Paper Plates	46-47

DESSERT CUPS & BOWLS

Paper Dessert Cups	48-49
--------------------------	-------

KITS

Kits	51
------------	----

TABLE ACCESSORIES

Table Accessories.....	52-53
------------------------	-------

BIKE BOTTLES & TUMBLERS

Bike Bottles & Tumblers	54-55
-------------------------------	-------

LIDS

Lids	56-57
------------	-------

INFORMATION SECTION II

Additional Charges	58-60
Printing Concerns.....	61
Artwork Specifications	62
General Information.....	62-63



- Most advanced technology
- Full Color Process
- Petite or Grande programs



- 1-6 Days
- Low Quantity Runs
- Huge Product Selection
- Quick Turn-around
- Up to 4 Spot Color Imprints
- Pad Print/Screen Print



- 3-12 Days
- High Speed/High Quantity
- Economical Pricing
- Up to 6 Spot Color Imprints
- Special Packaging & Fulfillment
- 4-Color Process Printing



- Custom Manufactured Products
- Higher Quantity Runs
- Full Bleed / 4 color Process Printing
- Economical Pricing
- Special Packaging & Fulfillment



Look for these labels throughout the catalog to help guide your selections



- Eco Friendly Products
- Biodegradable or made from 100% Recycled Material
- Compostable
- Reusable



- Most of the items in our catalog are made in the USA. Please look for this label.



24 Hour Lightning Rush

24-Hour Turn-around on Petite Line Products with this symbol.

One-color imprints ONLY with a maximum of 2,500 pieces. Final artwork and P.O. must be received no later than 12:00pm EST. Proof will automatically be waived unless your artwork does not meet proof specifications (see website for waive proof guidelines). If a proof is requested, approval must be received by 1:30pm EST. If all of the required information is not received by the specified times, your order will be recognized as being received the next business day.

GO GREEN

TK Cups-Sorg's offers a wide range of Eco-Friendly items
THE ITEMS IN THIS ECO-FRIENDLY COLLECTION
OFFER ALL OR SOME OF THE FOLLOWING BENEFITS:

- Natural based and fully compostable
- Thermoformed from NatureWorks® PLA
- Made entirely from renewable resources of corn
- Stamp of approval from the Biodegradable Products Institute (BPI®)
- Made from recycled content
- Are recyclable
- BPA free

For more information visit
tkcups-sorgs.com

Please see pg. 60 for environmental logos legend



**Compostable Soft-sided
Clear Greenware Cups**
see pages 18-19



Napkins
see pages 6-11



Stadium Cups
see pages 14-17



Coffee Cup Sleeves
see pages 36-37



Coasters
see pages 40-43



**Compostable
Paper Hot Cups**
see pages 32-33



**Compostable
Paper Hot Cups Lids**
see pages 32-33



**Compostable
Paper Plates**
see pages 32-33



**Compostable
Straws and Cutlery**
see page 52



Bike Bottles
see pages 54-55



TK delivers. Right on time!

Quick turnaround available on many items.
1 color on select products, 2500 piece maximum.

Fast, easy, and affordable!

Expanded program now includes
more items. Look for this label
throughout the catalog to help
guide your selections.



TK. In hands, on time. There when you need us!

LINEN-ESQUE® NAPKINS & GUEST TOWELS

LINEN-ESQUE® NAPKINS & GUEST TOWELS

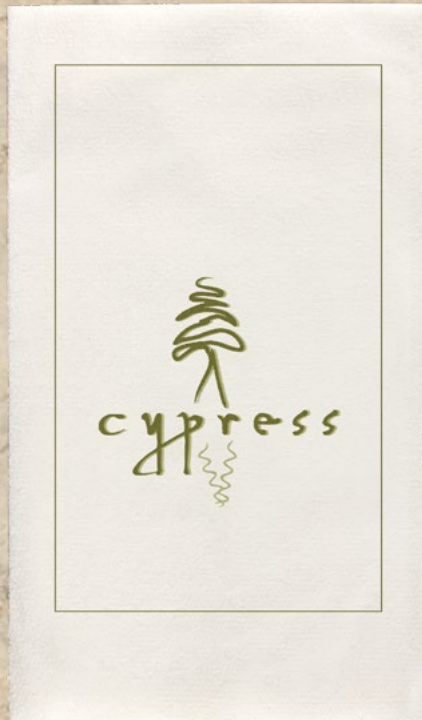
These napkins are a non-woven, paper/poly cloth replacement



SEB14



LEG134



LEG174



FOIL STAMP & DEBOSS OPTIONS

Available on TK Cups-Sorg's Petite Line napkins only.

Maximum imprint area: 3"x 3"

Standard foil: Gold, silver, black, white, red, blue, & green.

Other Colors: May require additional production time & additional cost.



Example of poly sleeve packaging



SE18



SE16S

Napkin color may vary slightly within run and is not considered a defect.



= Indicates **Lightning Rush Service** available on this item



PRICE PER PIECE - INCLUDES 1-COLOR PRINT (5R)

ITEM#	ITEM DESCRIPTION	250	500	1,000	2,500	5,000
SEB14S	Linen-Esque® Beverage Napkins <i>1/4 Fold 5"x5" Folded. 10"x10" open</i>	\$0.544	\$0.526	\$0.355	\$0.316	\$0.299
LEG134S	Linen-Esque® Cost Saver Guest Towel <i>1/4 Fold 6 1/2"x5" Folded. 10"x13" open</i>	\$0.716	\$0.678	\$0.444	\$0.397	\$0.357
SE16S	Linen-Esque® Guest Towels <i>1/6 Fold 4 1/4" x 8 1/2" Folded, 12" x 17" open</i>	\$0.743	\$0.603	\$0.465	\$0.408	\$0.377
HT18	Linen-Esque® Dinner Napkins <i>1/8 Fold 4 1/4" x 8 1/2" Folded. 17"x17" open</i>	\$0.753	\$0.615	\$0.482	\$0.427	\$0.393
Add for second ink color <i>Ink colors must be separated .25" or more on all Petite Line napkins</i>		\$0.160	\$0.139	\$0.100	\$0.084	\$0.070
OPTIONS:		Foil stamping option: Add \$.030(v) per piece., Add \$62.50(v) die charge(replaces set-up charge) Deboss option: Add \$62.50(v) die charge(replaces set-up charge) For additional charges and information refer to page 58, grid A				



PRICE PER/M (M=THOUSAND) - INCLUDES 1-COLOR PRINT (3RSTU)

ITEM#	ITEM DESCRIPTION	10M	20M	30M	60M	120M	252M
SEB14	Linen-Esque® Beverage Napkins <i>1/4 Fold 5"x5" Folded. 10"x10" open</i>	\$262.21	\$144.99	\$141.30	\$128.74	\$117.69	\$107.95
LEG134	Linen-Esque® Cost Saver Guest Towel <i>1/4 Fold 5" x 6 1/2" Folded. 10"x13" open</i>	\$270.11	\$188.40	\$182.13	\$164.85	\$150.45	\$128.34
LEG174	Linen-Esque® Guest Towel <i>1/4 Fold 5" x 8 1/2" Folded, 10" x 17" open</i>	\$277.88	\$230.79	\$226.08	\$207.24	\$189.60	\$174.81
SE16	Linen-Esque® Guest Towels <i>1/6 Fold 4 1/4" x 8 1/2" Folded, 12" x 17" open</i>	\$362.33	\$279.33	\$270.90	\$247.38	\$225.89	\$208.99
SE18	Linen-Esque® Dinner Napkins <i>1/8 Fold 4 1/4" x 8 1/2" Folded. 17"x17" open</i>	\$392.51	\$306.00	\$295.50	\$269.40	\$247.00	\$225.95
Add for each additional ink color		\$6.96	\$5.48	\$4.73	\$3.71	\$2.63	\$2.39
OPTIONS:	Additional panel imprints: Add \$2.00/m (r) per panel		For additional charges and information refer to page 59, grid G				

LINEN-ESQUE® NAPKINS & GUEST TOWELS

3-PLY WHITE & VANILLA NAPKINS

3-PLY WHITE & VANILLA NAPKINS

Production Note:

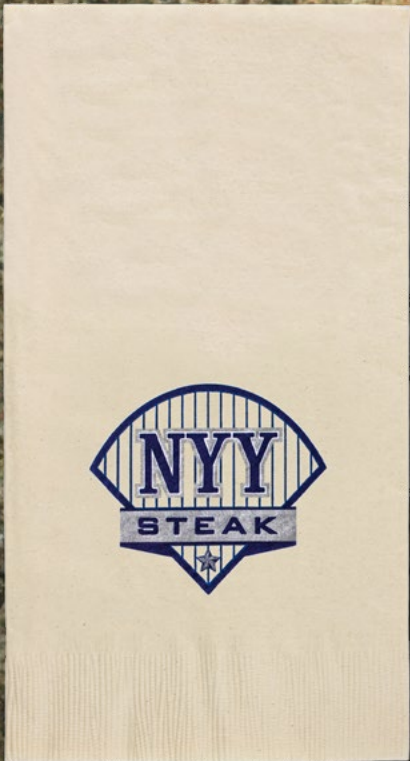
See Page 61 for information concerning Tight Registration on Petite Line Napkins.



B13



L33



D53-EC

Approximate PMS Color for Vanilla Napkins
PMS 7499 U



D63



Example of Chip Box packaging



FOIL STAMP & DEBOSS OPTIONS

Available on TK Cups-Sorg's Petite Line napkins only.

Maximum imprint area: 3" x 3"

Standard foil: Gold, silver, black, white, red, blue, & green.

Other Colors: May require additional production time & additional cost.


Please visit us at www.tkcups-sorgs.com



3-PLY WHITE & VANILLA NAPKINS



PRICE PER PIECE - INCLUDES 1-COLOR PRINT (5R)

ITEM#	COIN EDGE EMBOSSED NAPKINS	250	500	1,000	2,500	5,000
B13S	White 3-Ply Beverage Napkins 1/4 Fold 5"x5" Folded, 10"x10" open	\$0.363	\$0.338	\$0.245	\$0.192	\$0.175
L33S	White 3-Ply Luncheon Napkins 1/4 Fold 6 1/2" x 6 3/4" Folded, 13" x 13 1/2" open	\$0.411	\$0.386	\$0.280	\$0.220	\$0.200
D53S	White 3-Ply Dinner Napkins 1/8 Fold 4 1/4" x 7 1/2" Folded, 15"x17" open	\$0.485	\$0.463	\$0.332	\$0.252	\$0.227
D53S-EC	Vanilla 3-Ply Dinner Napkins 1/8 Fold 4 1/4" x 7 1/2" Folded, 15" x 17" open	\$0.708	\$0.660	\$0.478	\$0.376	\$0.345
D63S	 White 3-Ply Dinner Napkins 1/8 Fold 4 1/4" x 8 1/2" Folded, 17" x 17" open	\$0.506	\$0.471	\$0.344	\$0.265	\$0.238
Add for second ink color		\$0.160	\$0.139	\$0.100	\$0.084	\$0.070

Ink colors must be separated .25" or more on all Petite Line napkins


OPTIONS: Foil stamp option: Add \$.030(v) per piece., Add \$62.50(v) die charge (replaces set-up charge)

Deboss option: Add \$62.50(v) die charge (replaces set-up charge)

For additional charges and information refer to page 58, grid A



PRICE PER/M (M=THOUSAND) - INCLUDES 1-COLOR PRINT (3RSTU)

ITEM#	COIN EDGE EMBOSSED NAPKINS	10M	20M	30M	60M	120M	250M
B13	White 3-Ply Beverage Napkins 1/4 Fold 5"x5" Folded, 10"x10" open	\$88.65	\$70.21	\$60.23	\$47.59	\$38.27	\$34.28
L33	White 3-Ply Luncheon Napkins 1/4 Fold 6 1/2" x 6 3/4" Folded, 13" x 13 1/2" open	\$138.52	\$118.69	\$102.49	\$81.30	\$71.02	\$64.67
D53	White 3-Ply Dinner Napkins 1/8 Fold 4 1/4" x 7 1/2" Folded, 15"x17" open	\$173.66	\$146.35	\$124.87	\$104.59	\$94.84	\$80.78
D53-EC	Vanilla 3-Ply Dinner Napkins 1/8 Fold 4 1/4" x 7 1/2" Folded, 15" x 17" open	\$210.73	\$180.78	\$168.59	\$138.92	\$129.97	\$98.35
D63	 White 3-Ply Dinner Napkins 1/8 Fold 4 1/4" x 8 1/2" Folded, 17" x 17" open	\$202.40	\$185.82	\$159.65	\$136.22	\$131.08	\$95.29
Add for each additional ink color		\$6.96	\$5.48	\$4.73	\$3.71	\$2.63	\$2.39

OPTIONS: Additional panel imprints: Add \$2.00/m (r) per panel

For additional charges and information refer to page 59, grid F

Please visit us at www.tkcups-sorgs.com

2-PLY WHITE, VANILLA, & KRAFT NAPKINS

2-PLY WHITE, VANILLA, & KRAFT NAPKINS



B12D

B12

B12R



B12M-EC



B12FLEXO1



L32



D52

D52M-EC



FOIL STAMP & DEBOSS OPTIONS

Available on TK Cups-Sorg's Petite Line napkins only.

Maximum imprint area: 3"x 3"

Standard foil: Gold, silver, black, white, red, blue, & green.

Other Colors: May require additional production time & additional cost.



PRICE PER PIECE - INCLUDES 1-COLOR PRINT (5R)

ITEM#	COIN EDGE EMBOSSED NAPKINS	250	500	1,000	2,500	5,000
B12S	100% Recycled White 2-Ply Beverage Napkins 1/4 Fold 5"x5" Folded, 10"x10" open	\$0.292	\$0.286	\$0.209	\$0.179	\$0.153
B12MS-EC	Vanilla 2-Ply Beverage Napkins 1/4 Fold 5"x5" Folded, 10"x10" open	\$0.397	\$0.368	\$0.268	\$0.209	\$0.189
D52S	White 2-Ply Dinner Napkins 1/8 Fold 4 1/4" x 7 1/2" Folded, 15"x17" open	\$0.485	\$0.468	\$0.335	\$0.256	\$0.228
D52MS-EC	Vanilla 2-Ply Dinner Napkins 1/8 Fold 4 1/4" x 7 1/2" Folded, 15"x17" open	\$0.631	\$0.618	\$0.455	\$0.352	\$0.316
D52SK	Kraft 2-Ply Dinner Napkins 1/8 Fold 4 1/4" x 7 1/2" Folded, 15"x17" open	\$0.485	\$0.468	\$0.335	\$0.256	\$0.228
D62S	White 2-Ply Dinner Napkins 1/8 Fold 4 1/4" x 8 1/2" Folded, 17"x17" open	\$0.495	\$0.472	\$0.339	\$0.258	\$0.232
Add for second ink color		\$0.160	\$0.139	\$0.100	\$0.084	\$0.070
Ink colors must be separated .25" or more on all Petite Line napkins		For additional charges and information refer to page 58, grid A				

OPTIONS: Foil stamping option: Add \$.030(v) per piece., Add \$62.50(v) die charge (replaces set-up charge)

Deboss option : Add \$62.50(v) die charge (replaces set-up charge)



PRICE PER/M (M=THOUSAND) - INCLUDES FULL COLOR PRINT (3RSTU)

ITEM#	COIN EDGE EMBOSSED NAPKINS	10M	20M	30M	60M	120M	250M
B12D	White 2-Ply Beverage Napkins Digital Imprint 1/4 Fold 5"x5" Folded, 10"x10" open	\$72.07	\$66.17	\$54.01	\$45.05	\$41.77	\$37.12

PRICE PER/M (M=THOUSAND) - INCLUDES 1-COLOR PRINT (3RSTU)

ITEM#	COIN EDGE EMBOSSED NAPKINS	10M	20M	30M	60M	120M	250M
B12	White 2-Ply Beverage Napkins 1/4 Fold 5"x5" Folded, 10"x10" open	\$61.23	\$48.49	\$40.74	\$35.37	\$30.57	\$23.20
B12R	100% Recycled White 2-Ply Beverage Napkins* 1/4 Fold 5"x5" Folded, 10"x10" open	\$76.53	\$60.62	\$50.93	\$44.20	\$33.96	\$25.78
B12M-EC	Vanilla 2-Ply Beverage Napkins 1/4 Fold 5"x5" Folded, 10"x10" open	\$94.10	\$83.64	\$75.80	\$62.74	\$57.35	\$45.58
L32	White 2-Ply Luncheon Napkins 1/4 Fold 6 1/2" x 6 3/4" Folded, 13" x 13 1/2" open	\$111.08	\$87.98	\$74.01	\$64.30	\$56.13	\$51.06
D52	White 2-Ply Dinner Napkins 1/8 Fold 4 1/4" x 7 1/2" Folded, 15"x17" open	\$152.27	\$128.82	\$105.92	\$90.56	\$80.22	\$63.62
D52M-EC	Vanilla 2-Ply Dinner Napkins 1/8 Fold 4 1/4" x 7 1/2" Folded, 15"x17" open	\$190.34	\$161.03	\$132.41	\$113.20	\$89.14	\$70.68
D62	White 2-Ply Dinner Napkins 1/8 Fold 4 1/4" x 8 1/2" Folded, 17"x17" open	\$170.36	\$143.57	\$122.53	\$102.62	\$93.03	\$79.25
Add for each additional ink color		\$6.96	\$5.48	\$4.73	\$3.71	\$2.63	\$2.39

OPTIONS: Additional panel imprints: Add \$2.00/m (r) per panel

For additional charges and information refer to page 59, grid F

*Recycled napkins have a less bright white appearance.



PRICE PER/M (M=THOUSAND) (3T2U)

SUBJECT TO +/- 10% OVER/UNDER RUN - OVERS WILL BE INVOICED

ITEM#	ITEM DESCRIPTION	50M	75M	100M	150M	250M
B12FLEXO1	2 Ply Beverage Napkin - 1 Panel	\$74.68	\$71.04	\$67.39	\$61.20	\$59.50
B12FLEXO2	2 Ply Beverage Napkin - 2 Panel	\$78.32	\$74.68	\$69.21	\$62.90	\$61.20
B12FLEXO3	2 Ply Beverage Napkin - 3 Panel	\$80.14	\$76.50	\$71.04	\$64.60	\$62.90
B12FLEXO4	2 Ply Beverage Napkin - 4 Panel	\$83.79	\$78.32	\$74.68	\$66.30	\$64.60
Plate Charges: 1 Color \$952.79 2 Color: \$1,333.90 3 Color: \$1,706.35 4 Color: \$2,174.08 5 Color: \$2,650.48 6 Color: \$3,118.21 (6V)						

Flexographic Napkin Production Note: All prices subject to review upon final artwork and confirmed po. For additional charges and information refer to page 60, grid N
Digital proof only/No pre-production proof available. Napkins have a pin edge emboss. * 3 Ply Napkins also available

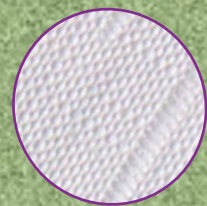
2-PLY WHITE, VANILLA & KRAFT NAPKINS



BE6



B11



Example of
Over-All Linen
Emboss



LE3



L31



PRICE PER PIECE - INCLUDES 1-COLOR PRINT (5R)

ITEM#	OVER-ALL LINEN EMBOSSED NAPKINS	250	500	1,000	2,500	5,000
BE6S	White Over-All Linen Emboss 1-Ply Beverage Napkins 1/4 Fold 5"x5" Folded. 10"x10" open	\$0.258	\$0.245	\$0.179	\$0.136	\$0.123
Add for second ink color* *Ink colors must be separated .25" or more on all Petite Line napkins		\$0.160	\$0.139	\$0.100	\$0.084	\$0.070

For additional charges and information refer to page 58, grid A



PRICE PER/M (M=THOUSAND) - INCLUDES 1-COLOR PRINT (3RSTU)

ITEM#	ITEM DESCRIPTION	10M	20M	30M	60M	120M	250M
C1VN	White 1-Ply Cocktail Napkins Over-All Linen Emboss Value Grade 1/4 Fold 5" x 5", 10" x 10" open	\$58.34	\$45.56	\$37.09	\$31.51	\$27.11	\$23.01
BE6	White 1-Ply Beverage Napkins Over-All Linen Emboss 1/4 Fold 5" x 5", 10" x 10" open	\$58.34	\$45.56	\$37.09	\$31.51	\$27.11	\$23.01
B11	White 1-Ply Beverage Napkins Coin Edge Emboss 1/4 Fold 5" x 5", 10" x 10" open	\$58.34	\$45.56	\$37.09	\$31.51	\$27.11	\$23.01
LE3	White 1-Ply Luncheon Napkins Over-All Linen Emboss Semi-Crepe 1/4 Fold 6 1/2" x 6 3/4", 13" x 13 1/2" open	\$104.47	\$82.75	\$69.66	\$55.02	\$46.80	\$43.32
L31	White 1-Ply Luncheon Napkins Coin Edge Emboss 1/4 Fold 6 1/2" x 6 3/4", 13" x 13 1/2" open	\$104.47	\$82.75	\$69.66	\$55.02	\$46.80	\$43.32
Add for each additional ink color		\$6.96	\$5.48	\$4.73	\$3.71	\$2.63	\$2.39

OPTIONS: Additional panel imprints: Add \$2.00/m (r) per panel

For additional charges and information refer to page 59, grid G

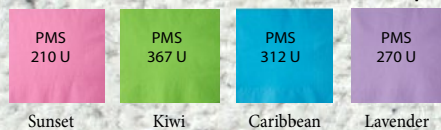
Island Colors

Color inks are not recommended on color napkins.
Please choose from black ink, metallic inks, foil or deboss options.



B12IS

Island Colors Also available in Dinner napkin



FOIL STAMP & DEBOSS OPTIONS

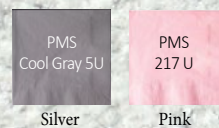
Available on TK Cups-Sorg's Petite Line napkins only.

Maximum imprint area: 3" x 3"

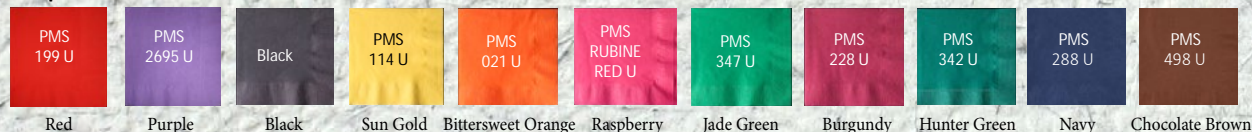
Standard foil: Gold, silver, black, white, red, blue, & green.

Other Colors: May require additional production time & additional cost.

Light-Tone Colors



Deep - Tone Colors



B12CS



D52C



PRICE PER PIECE - INCLUDES 1-COLOR PRINT (5R)

ITEM#	COIN EDGE EMBOSSED NAPKINS	250	500	1,000	2,500	5,000
B12MS	Colored 2-Ply Beverage Napkins Light-Tone Colors 1/4 Fold 5" x 5" Folded, 10" x 10" open	\$0.420	\$0.391	\$0.287	\$0.223	\$0.201
B12CS	Colored 2-Ply Beverage Napkins Deep-Tone Colors 1/4 Fold 5" x 5" Folded, 10" x 10" open	\$0.425	\$0.397	\$0.296	\$0.232	\$0.218
B12IS	Colored 2-Ply Beverage Napkins Island Colors 1/4 Fold 5" x 5" Folded, 10" x 10" open	\$0.425	\$0.397	\$0.296	\$0.232	\$0.218
D52MS	Colored 2-Ply Dinner Napkins Light-Tone Colors 1/8 Fold 4 1/4" x 7 1/2" Folded, 15" x 17" open	\$0.648	\$0.635	\$0.468	\$0.362	\$0.325
D52CS	Colored 2-Ply Dinner Napkins Deep-Tone Colors 1/8 Fold 4 1/4" x 7 1/2" Folded, 15" x 17" open	\$0.742	\$0.692	\$0.501	\$0.394	\$0.362
D52IS	Colored 2-Ply Dinner Napkins Island Colors 1/8 Fold 4 1/4" x 7 1/2" Folded, 15" x 17" open	\$0.742	\$0.692	\$0.501	\$0.394	\$0.362
Add for second ink color Ink colors must be separated .25" or more on all Petite Line napkins		\$0.160	\$0.139	\$0.100	\$0.084	\$0.070

OPTIONS:

Foil stamping option: Add \$.030(v) per piece. Add \$62.50(v) die charge (replaces set-up charge)

Deboss option: Add \$62.50(v) die charge (replaces set-up charge)

Call customer service for questions on size, fold, and availability of more options.

For additional charges and information refer to page 58, grid A



PRICE PER/M (M=THOUSAND) - INCLUDES 1-COLOR PRINT (3RSTU)

ITEM#	COIN EDGE EMBOSSED NAPKINS	12M	24M	36M	60M	120M	252M
B12M	Colored 2-Ply Beverage Napkins Light-Tone Colors 1/4 Fold 5" x 5" Folded, 10" x 10" open	\$103.45	\$91.97	\$83.33	\$68.96	\$63.04	\$50.11
B12C	Colored 2-Ply Beverage Napkins Deep-Tone Colors 1/4 Fold 5" x 5" Folded, 10" x 10" open	\$117.67	\$107.10	\$98.05	\$78.44	\$74.68	\$64.49
D52M	Colored 2-Ply Dinner Napkins Light-Tone Colors 1/8 Fold 4 1/4" x 7 1/2" Folded, 15" x 17" open	\$167.01	\$142.34	\$123.97	\$103.33	\$96.30	\$75.44
D52C	Colored 2-Ply Dinner Napkins Deep-Tone Colors 1/8 Fold 4 1/4" x 7 1/2" Folded, 15" x 17" open	\$177.51	\$152.30	\$142.00	\$117.02	\$109.47	\$82.85
Add for each additional ink color		\$6.96	\$5.48	\$4.73	\$3.71	\$2.63	\$2.39

OPTIONS:

Additional panel imprints: Add \$2.00/m (r) per panel

* Light-tone colors available for Grande are Silver and Pink.

* Deep-tone colors available for Grande are Red, Black, Bittersweet Orange, Sun Gold, Jade Green, and Hunter Green.

For additional charges and information refer to page 59, grid H

Please note: The PMS colors referenced on these pages are only a guide. We cannot match napkin colors exactly to the Pantone® colors listed. Colored napkins are dyed tissue paper and will vary slightly in the degree of "brightness" and/or shade from lot to lot. It is possible that Beverage napkins and Dinner napkins of the same color will not match exactly. Please call for a current sample if this is a concern. PMS colors listed above are approximate.



TSS12-00

EVERYDAY
LOW PRICE!
\$.43 (R)
MIN. 250
TSS12-00
TSS 17-00



TSS17-00



TSS22-CR

ColorRich™ Stadium Cups
500 - 1 million pieces
As fast as 7 days!



TSS22-00
Lid, Whistle Straw, Cap

EVERYDAY
LOW PRICE!
\$.48 (R)
MIN. 250
TSS 22-00



TSS32-OS

ColorRich™ Stadium Cups

PRICE PER PIECE (6T)

ITEM#	ITEM DESCRIPTION	500	1,000	2,500	5,000	10,000	25,000
TSS12-CR	12 oz. Color Rich Smooth White Cup	\$0.61	\$0.61	\$0.53	\$0.50	\$0.48	\$0.45
TSS17-CR	16 oz. Color Rich Smooth White Cup	\$0.62	\$0.62	\$0.56	\$0.53	\$0.49	\$0.48
TSS22-CR	22 oz. Color Rich Smooth White Cup	\$0.62	\$0.62	\$0.56	\$0.53	\$0.49	\$0.48
TSS32-CR	32 oz. Color Rich Smooth White Cup	\$0.70	\$0.71	\$0.65	\$0.61	\$0.58	\$0.57
Add for identical second side imprint		\$0.12	\$0.12	\$0.09	\$0.09	\$0.09	\$0.09
Add for full wrap		\$0.17	\$0.17	\$0.13	\$0.13	\$0.13	\$0.13



PRICE PER PIECE - INCLUDES 1-COLOR PRINT (5R)

ITEM#	ITEM DESCRIPTION	250	500	1,000	2,500	5,000
TSS12-00	12 oz. Smooth White Cup	\$0.43	\$0.43	\$0.43	\$0.43	\$0.43
TSS17-00	16 oz. Smooth White Cup	\$0.43	\$0.43	\$0.43	\$0.43	\$0.43
TSS22-00	22 oz. Smooth White Cup	\$0.48	\$0.48	\$0.48	\$0.48	\$0.48
TSS32-00	32 oz. Smooth White Cup	\$0.50	\$0.50	\$0.50	\$0.50	\$0.50
Add for each additional ink color per image		\$0.40	\$0.35	\$0.29	\$0.27	\$0.24
Add for identical second side multi color prints (No second side charge for 1-color print)		\$0.22	\$0.20	\$0.16	\$0.15	\$0.12



PRICE PER PIECE - INCLUDES 1-COLOR PRINT (3RSTU)

ITEM#	ITEM DESCRIPTION	10,000	25,000	50,000	75,000	100,000	250,000
TSS12-OS	12 oz. Smooth White Cup	\$0.446	\$0.412	\$0.369	\$0.324	\$0.284	\$0.256
TSS17-OS	16 oz. Smooth White Cup	\$0.446	\$0.423	\$0.391	\$0.348	\$0.306	\$0.277
TSS22-OS	22 oz. Smooth White Cup	\$0.492	\$0.458	\$0.385	\$0.385	\$0.354	\$0.327
TSS32-OS	32 oz. Smooth White Cup	\$0.510	\$0.505	\$0.447	\$0.385	\$0.354	\$0.327
Add for each additional ink color (No second side charge for second side print) 4 color process not available		\$0.021	\$0.021	\$0.021	\$0.014	\$0.012	\$0.009

For additional charges and information refer to page 59, grid I

TRANSLUCENT, MOOD, & COLORED STADIUM CUPS

TRANSLUCENT, MOOD, & COLORED STADIUM CUPS

Color Stadium Cups



TSS-17



TSS-22



24 HOUR

Red
Black
Yellow Gold
Royal Blue

Cup Color	Approx PMS Color	TSS 12	TSS 17	TSS 22	TSS 32	F16	F22
04 Lime Green	354 C						
07 Light Pink	237 C						
01 Vanilla	7499 C						
05 Black	N/A						
10 Red	186 C						
17 Green	342 C						
20 Yellow Gold	128 C						
24 Navy	533 C						
25 Royal Blue	2728 C						
40 Orange	1505 C						
45 Natural	N/A						
83 Purple	266 C						
84 Teal	3262 C						
85 Maroon	194 C						
00 White	N/A						

Translucent Stadium Cups

While supplies last

Translucent
Translucent Blue
Translucent Red
Translucent Purple
Translucent Green

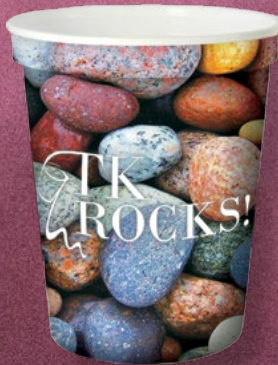


TSC17



ColorRich™ Stadium Cups

See pgs. 14-15



TSS12-CR

Translucent Color-to-Color Stadium Cups

Cold activated color changing!



Pink to Purple
Blue to Purple
Green to Blue
Yellow to Green

MC16

Translucent Frost-to-Color Stadium Cups

Cold activated color changing!



Frost to Orange
Frost to Red
Frost to Blue
Frost to Magenta



PRICE PER PIECE - INCLUDES 1-COLOR PRINT (5R)

ITEM#	ITEM DESCRIPTION	250	500	1,000	2,500	5,000
TSS-12	12 oz. Smooth Colored Cup	\$0.60	\$0.55	\$0.53	\$0.50	\$0.49
TSS-17	16 oz. Smooth Colored Cup	\$0.66	\$0.60	\$0.54	\$0.53	\$0.52
TSS-22	22 oz. Smooth Colored Cup	\$0.77	\$0.69	\$0.61	\$0.60	\$0.56
TSS-32	32 oz. Smooth Colored Cup	\$0.89	\$0.84	\$0.76	\$0.72	\$0.65
F16SC	16 oz. Tall Fluted Cup	\$0.73	\$0.66	\$0.58	\$0.57	\$0.54
F22SC	22 oz. Tall Fluted Cup	\$0.84	\$0.77	\$0.69	\$0.66	\$0.60
Add for each additional ink color per image		\$0.40	\$0.35	\$0.29	\$0.27	\$0.24
Add for identical second side multi color prints (No second side charge for 1-color print)		\$0.22	\$0.20	\$0.16	\$0.15	\$0.12



For additional charges and information refer to page 58, grid B

PRICE PER PIECE - INCLUDES 1-COLOR PRINT (3RSTU)

ITEM#	ITEM DESCRIPTION	10,000	25,000	50,000	75,000	100,000	250,000
TSS12-COS	12 oz. Smooth Colored Cup	\$0.552	\$0.469	\$0.395	\$0.356	\$0.324	\$0.291
TSS17-COS	16 oz. Smooth Colored Cup	\$0.552	\$0.506	\$0.423	\$0.378	\$0.341	\$0.311
TSS22-COS	22 oz. Smooth Colored Cup	\$0.552	\$0.506	\$0.461	\$0.414	\$0.377	\$0.327
Add for each additional ink color (No second side charge for 1-color print)		\$0.020	\$0.020	\$0.020	\$0.013	\$0.011	\$0.009

4-color process not available

Ink colors will appear muted on colored cups

For additional charges and information refer to page 59, grid I



PRICE PER PIECE - INCLUDES 1-COLOR PRINT (5R)

ITEM#	ITEM DESCRIPTION	250	500	1,000	2,500	5,000
TSC17	16 oz. Translucent Stadium Cup (while supplies last)	\$0.74	\$0.68	\$0.58	\$0.57	\$0.54
MC16	16 oz. Color-Changing Mood Stadium Cup	\$1.11	\$0.97	\$0.95	\$0.93	\$0.89
Add for each additional ink color per image		\$0.40	\$0.35	\$0.29	\$0.27	\$0.24
Add for identical second side multi color prints (No second side charge for 1-color print)		\$0.22	\$0.20	\$0.16	\$0.15	\$0.12

Color Changing Characteristics:

The nature of the color changing effect on mood cups is such that the color will be pastel and not a solid color.

Formation of Mood Cups:

Due to the color changing additive in the plastic, it is normal to see air bubbles, especially around the lip and rim. This is not a defect.

For additional charges and information refer to page 58, grid B

TRANSLUCENT, MOOD, & COLORED STADIUM CUPS

CLEAR SOFT-SIDED CUPS

CLEAR SOFT-SIDED CUPS



GC7



GC9OF
1-side imprint only



GC16S



GC20



PRICE PER PIECE - INCLUDES 1-COLOR PRINT (5R)

ITEM#	ITEM DESCRIPTION	250	500	1,000	2,500	5,000
GC7	7 oz. Greenware Cup	\$0.61	\$0.51	\$0.40	\$0.37	\$0.36
GC9OF	9 oz. Greenware Squat Cup 1-side imprint only	\$0.61	\$0.51	\$0.40	\$0.37	\$0.36
GC10	10 oz. Greenware Cup	\$0.66	\$0.54	\$0.46	\$0.41	\$0.40
GC12S	12/14 oz. Greenware Cup	\$0.71	\$0.63	\$0.52	\$0.48	\$0.44
GC16S	16/18 oz. Greenware Cup	\$0.83	\$0.72	\$0.58	\$0.54	\$0.52
GC20	20 oz. Greenware Cup	\$0.99	\$0.85	\$0.78	\$0.75	\$0.73
TD-24	24 oz. Clear Plastic Cup	\$1.07	\$0.93	\$0.85	\$0.82	\$0.81
Add for each additional ink color per image		\$0.40	\$0.35	\$0.29	\$0.27	\$0.24
Add for identical second side multi color prints		\$0.22	\$0.20	\$0.16	\$0.15	\$0.12

(No second side charge for 1-color print)

For additional charges and information refer to page 58, grid B



PRICE PER PIECE - INCLUDES 1-COLOR PRINT (3RSTU)

ITEM#	ITEM DESCRIPTION	10,000	25,000	50,000	75,000	100,000	250,000
GC7-OS	7 oz. Greenware Cup	\$0.350	\$0.333	\$0.319	\$0.289	\$0.265	\$0.241
GC9OF-OS	9 oz. Greenware Squat Cup	\$0.350	\$0.333	\$0.319	\$0.289	\$0.265	\$0.241
GC10-OS	10 oz. Greenware Cup	\$0.392	\$0.383	\$0.319	\$0.289	\$0.265	\$0.241
GC12-OS	12/14 oz. Greenware Cup	\$0.425	\$0.379	\$0.318	\$0.280	\$0.253	\$0.225
GC16-OS	16/18 oz. Greenware Cup	\$0.485	\$0.408	\$0.337	\$0.304	\$0.265	\$0.245
GC20-OS	20 oz. Greenware Cup	\$0.630	\$0.604	\$0.512	\$0.457	\$0.418	\$0.378
Add for each additional ink color per image		\$0.020	\$0.020	\$0.020	\$0.014	\$0.011	\$0.009

(No second side charge) 4 color process not available

For additional charges and information refer to page 59, grid I

Note: The "T" Series Cups (TD-24) are made from of PETE #1.

The "G" Series Cups are made from Compostable Nature Works® PLA Material.
Greenware Cups breakdown with heat and may tend to be cloudy or grainy. Cups may warp if exposed to temperatures above 105°F.

CLEAR SOFT-SIDED CUPS

EASYLINE™ PLASTIC CUPS

EASYLINE™ PLASTIC CUPS



EL9OF



EL12



EL16



EL20



PRICE PER PIECE - INCLUDES 1-COLOR PRINT (5R)

ITEM#	ITEM DESCRIPTION	250	500	1,000	2,500	5,000
EL9OF	9 oz. EasyLine Clear Plastic Cup 1-side imprint	\$0.58	\$0.47	\$0.37	\$0.35	\$0.34
EL12	12 oz. EasyLine Clear Plastic Cup	\$0.67	\$0.59	\$0.49	\$0.45	\$0.42
EL16	16 oz. EasyLine Clear Plastic Cup	\$0.78	\$0.68	\$0.54	\$0.51	\$0.49
EL20	20 oz. EasyLine Clear Plastic Cup	\$0.93	\$0.80	\$0.73	\$0.70	\$0.69
Add for each additional ink color per image		\$0.40	\$0.35	\$0.29	\$0.27	\$0.24
Add for identical second side multicolor prints (No second side charge for 1-color print)		\$0.22	\$0.20	\$0.16	\$0.15	\$0.12

4-color process not available

For additional charges and information refer to page 58, grid B



PRICE PER PIECE - INCLUDES 1-COLOR PRINT (3RSTU)

ITEM#	ITEM DESCRIPTION	10,000	25,000	50,000	75,000	100,000	250,000
EL12-OS	12 oz. EasyLine Clear Plastic Cup	\$0.287	\$0.261	\$0.258	\$0.236	\$0.214	\$0.194
EL16-OS	16 oz. EasyLine Clear Plastic Cup	\$0.349	\$0.310	\$0.292	\$0.255	\$0.230	\$0.211
EL20-OS	20 oz. EasyLine Clear Plastic Cup	\$0.363	\$0.357	\$0.325	\$0.289	\$0.260	\$0.237
Add for each additional ink color per image (No charge for second side print)		\$0.020	\$0.020	\$0.020	\$0.014	\$0.011	\$0.009

4-color process not available

For additional charges and information refer to page 59, grid I

EASYLINE™ PLASTIC CUPS

TRANSLUCENT SOFT-SIDED PLASTIC CUPS

TRANSLUCENT SOFT-SIDED PLASTIC CUPS



P325-OS



XLT10
XLT10-OS



XLT12
XLT12-OS



XLT20



PRICE PER PIECE - INCLUDES 1-COLOR PRINT (5R)

ITEM#	ITEM DESCRIPTION	250	500	1,000	2,500	5,000
XLT5	5 oz. Translucent Plastic Cup	\$0.55	\$0.43	\$0.36	\$0.33	\$0.32
XLT7	7 oz. Translucent Plastic Cup	\$0.55	\$0.43	\$0.36	\$0.33	\$0.32
XLT10	10 oz. Translucent Plastic Cup	\$0.55	\$0.43	\$0.36	\$0.33	\$0.32
XLT12	12 oz. Translucent Plastic Cup	\$0.62	\$0.50	\$0.42	\$0.38	\$0.37
XLT1618	16/18 oz. Translucent Plastic Cup	\$0.64	\$0.52	\$0.45	\$0.41	\$0.40
XLT20	20 oz. Translucent Plastic Cup	\$0.89	\$0.77	\$0.71	\$0.67	\$0.66
XLT24	24 oz. Translucent Plastic Cup	\$0.97	\$0.86	\$0.80	\$0.77	\$0.75
Add for each additional ink color per image		\$0.40	\$0.35	\$0.29	\$0.27	\$0.24
Add for identical second side multi color prints (No second side charge for 1-color print)		\$0.22	\$0.20	\$0.16	\$0.15	\$0.12

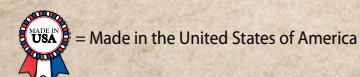
For additional charges and information refer to page 58, grid B



PRICE PER PIECE - INCLUDES 1-COLOR PRINT (3RSTU)

ITEM#	ITEM DESCRIPTION	10,000	25,000	50,000	75,000	100,000	250,000
P325-OS	3.25 oz. Frosted Plastic Souffle Cup	\$0.159	\$0.151	\$0.131	\$0.113	\$0.102	\$0.092
XLT5-OS	5 oz. Translucent Plastic Cup	\$0.172	\$0.165	\$0.145	\$0.129	\$0.116	\$0.105
XLT7-OS	7 oz. Translucent Plastic Cup	\$0.172	\$0.165	\$0.145	\$0.129	\$0.116	\$0.105
XLT10-OS	10 oz. Translucent Plastic Cup	\$0.172	\$0.165	\$0.145	\$0.129	\$0.116	\$0.105
XLT12-OS	12 oz. Translucent Plastic Cup	\$0.243	\$0.232	\$0.191	\$0.171	\$0.153	\$0.139
XLT1618-OS	16/18 oz. Translucent Plastic Cup	\$0.267	\$0.257	\$0.246	\$0.220	\$0.198	\$0.177
Add for each additional ink color (No charge for second side print) 4 color process not available		\$0.020	\$0.020	\$0.020	\$0.014	\$0.011	\$0.009

For additional charges and information refer to page 59, grid I



TRANSLUCENT SOFT-SIDED PLASTIC CUPS



P55



TP35



GLS2



ASIA2CL



SQ25CL



MT2



SHOT2



PRICE PER PIECE - INCLUDES 1-COLOR PRINT (5R)

ITEM#	ITEM DESCRIPTION	250	500	1,000	2,500	5,000
P55	5.5 oz. Frosted Plastic Souffle Cup	\$0.41	\$0.35	\$0.29	\$0.26	\$0.25
Add for each additional ink color per image		\$0.34	\$0.27	\$0.21	\$0.15	\$0.13
Add for identical second side multi color prints (No second side charge for 1-color print)		\$0.22	\$0.20	\$0.15	\$0.14	\$0.12



PRICE PER PIECE - INCLUDES 1-COLOR PRINT (5R)

ITEM#	ITEM DESCRIPTION	250	500	1,000	2,500	5,000
TP-35	3.5 oz. Clear Sampler	\$0.57	\$0.40	\$0.35	\$0.30	\$0.28
WSG1	1 oz. Clear Plastic Shot/Sampling Cup	\$0.46	\$0.34	\$0.28	\$0.25	\$0.23
GLS2	2 oz. Clear Plastic Shot/Sampling Cup	\$0.64	\$0.54	\$0.48	\$0.43	\$0.40
Add for each additional ink color per image		\$0.34	\$0.27	\$0.21	\$0.15	\$0.13
Add for identical second side multi color prints (No second side charge for 1-color print)		\$0.22	\$0.20	\$0.15	\$0.14	\$0.12



PRICE PER PIECE - INCLUDES 1-COLOR PRINT (5R)

ITEM#	ITEM DESCRIPTION	250	500	1,000	2,500	5,000
ASIA2CL	5" Clear Asian Style Sampling Spoon	\$0.85	\$0.72	\$0.66	\$0.62	\$0.61
SQ25CL	2.5" Clear Petite Square Sampling Dish	\$0.95	\$0.83	\$0.77	\$0.73	\$0.72
SHOT2	1.75 oz. Clear, Square Tasting Cup	\$0.95	\$0.83	\$0.77	\$0.73	\$0.72
MT2	2 oz. Clear Mini Martini Sampler - 2-Piece	\$1.41	\$1.29	\$1.23	\$1.20	\$1.18
Add for each additional ink color		\$0.39	\$0.34	\$0.28	\$0.26	\$0.23

For additional charges and information refer to page 58, grid B



For Grande Line options and pricing please see pages 26 and 27

HARD-SIDED CUPS, TUMBLERS, & STEMWARE



HARD SIDED CUPS, TUMBLERS, & STEMWARE



PRICE PER PIECE - INCLUDES 1-COLOR PRINT (5R)

ITEM#	ITEM DESCRIPTION	250	500	1,000	2,500	5,000
TP-35	3.5 oz. Clear Sampler	\$0.59	\$0.42	\$0.36	\$0.32	\$0.29
CT-5	5 oz. Squat Tumbler	\$0.63	\$0.51	\$0.45	\$0.41	\$0.38
CT-7	7 oz. Juice Style Tumbler	\$0.63	\$0.51	\$0.45	\$0.41	\$0.38
CT-8	8 oz. Tall Tumbler	\$0.63	\$0.51	\$0.45	\$0.41	\$0.38
OF-9	9 oz. Old Fashioned - Style Tumbler <i>1-side imprint only</i>	\$0.63	\$0.51	\$0.45	\$0.41	\$0.38
CT-10	10 oz. Tall Tumbler	\$0.63	\$0.51	\$0.45	\$0.41	\$0.38
CT-12	12 oz. Tumbler	\$0.72	\$0.67	\$0.57	\$0.52	\$0.47
CT-16	16 oz. Tumbler	\$1.14	\$0.99	\$0.81	\$0.76	\$0.70
YST9	9 oz. Clear Plastic "Rocks" Square Tumbler	\$1.14	\$1.03	\$0.97	\$0.94	\$0.88
YST12	12 oz. Clear Plastic Square Tumbler	\$1.33	\$1.22	\$1.15	\$1.12	\$1.06
CCW-5	5 oz. Wine Glass Stemware (2 piece)	\$1.61	\$1.38	\$1.16	\$1.04	\$0.96
CMT6	6 oz. Clear Martini Glass (2 piece)	\$3.21	\$3.06	\$2.53	\$2.26	\$2.00
Add for each additional ink color per image		\$0.40	\$0.35	\$0.29	\$0.27	\$0.24
Add for identical second side multi color prints (No second side charge for 1-color print)		\$0.22	\$0.20	\$0.16	\$0.15	\$0.12

For additional charges and information refer to page 58, grid B



PRICE PER PIECE - INCLUDES 1-COLOR PRINT (3RSTU)

ITEM#	ITEM DESCRIPTION	10,000	25,000	50,000	75,000	100,000	250,000
TP35-OS	3.5 oz. Clear Sampler	\$0.296	\$0.272	\$0.220	\$0.194	\$0.176	\$0.159
OF9-OS	9 oz. Old Fashioned - Squat Tumbler	\$0.367	\$0.331	\$0.305	\$0.257	\$0.234	\$0.208
CT10-OS	10 oz. Tumbler	\$0.367	\$0.331	\$0.305	\$0.257	\$0.234	\$0.208
Add for each additional ink color per image		\$0.020	\$0.020	\$0.020	\$0.014	\$0.011	\$0.009
No charge for second side prints 4 color process not available							

For additional charges and information refer to page 59, grid I

FROST FLEX TUMBLERS



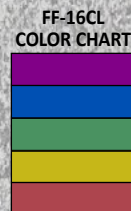
FF-09



FF-10



FF-16CL



FF-12



FF-20



FF-16

Frost Flex cups have a textured surface.
As a result print may appear jagged.

Close up view of textured
Frost Flex cups.



PRICE PER PIECE - INCLUDES 1-COLOR PRINT (5R)

ITEM#	ITEM DESCRIPTION	250	500	1,000	2,500	5,000
FF-09	9 oz. Frost Flex Tumbler	\$0.64	\$0.56	\$0.49	\$0.46	\$0.43
FF-10	10 oz. Frost Flex Tumbler	\$0.64	\$0.56	\$0.49	\$0.46	\$0.43
FF-12	12 oz. Frost Flex Tumbler	\$0.73	\$0.62	\$0.58	\$0.56	\$0.53
FF-16	16 oz. Frost Flex Tumbler	\$0.83	\$0.75	\$0.67	\$0.65	\$0.62
FF-16CL	16 oz. Colored Frost Flex Tumbler	\$0.90	\$0.81	\$0.72	\$0.69	\$0.66
FF-20	20 oz. Frost Flex Tumbler	\$1.10	\$1.01	\$0.84	\$0.81	\$0.76
Add for each additional ink color per image		\$0.40	\$0.35	\$0.29	\$0.27	\$0.24
Add for identical second side multi color prints (No second side charge for 1-color print)		\$0.22	\$0.20	\$0.16	\$0.15	\$0.12

For additional charges and information refer to page 58, grid B



PRICE PER PIECE - INCLUDES 1-COLOR PRINT (3RSTU)

ITEM#	ITEM DESCRIPTION	10,000	25,000	50,000	75,000	100,000	250,000
FF10-OS	10 oz. Frost Flex Tumbler	\$0.425	\$0.395	\$0.377	\$0.352	\$0.313	\$0.282
FF12-OS	12 oz. Frost Flex Tumbler	\$0.526	\$0.526	\$0.478	\$0.420	\$0.354	\$0.317
FF16-OS	16 oz. Frost Flex Tumbler	\$0.616	\$0.616	\$0.593	\$0.537	\$0.493	\$0.453
Add for each additional ink color		\$0.020	\$0.020	\$0.020	\$0.013	\$0.011	\$0.009
(No charge for second side print) 4 color process not available							

For additional charges and information refer to page 59, grid I

KEEPSAKE COLLECTION

KEEPSAKE COLLECTION



PRICE PER PIECE - INCLUDES 1-COLOR PRINT (6R)

ITEM#	ITEM DESCRIPTION	100	250	500	1,000	2,500	5,000
SW14	14 oz. Stemless Wine Glass 1-side imprint only	\$3.69	\$2.82	\$2.22	\$2.10	\$1.97	\$1.84
BC16	16 oz. Can-shaped Pilsner/Beer Cup 1-side imprint only	\$3.69	\$2.82	\$2.22	\$2.10	\$1.97	\$1.84
OPF6	6 oz. Clear Champagne Flute 1-side imprint only	\$3.11	\$2.73	\$2.59	\$2.51	\$2.40	\$2.26
OPF6W	6 oz. White Champagne Flute 1-side imprint only						
OPF6B	6 oz. Black Champagne Flute 1-side imprint only						
OPWS9	9 oz. Clear Wine Goblet 1-side imprint only	\$3.90	\$3.35	\$3.27	\$3.20	\$3.11	\$2.93
OPWS9W	9 oz. White Wine Goblet 1-side imprint only						
OPWS9B	9 oz. Black Wine Goblet 1-side imprint only						
H15	15 oz. Hurricane Glass 1-side imprint only	\$5.19	\$4.82	\$4.69	\$4.63	\$4.59	\$4.39
PT317	15 oz. Heavyweight Plastic Pint	\$2.97	\$2.59	\$2.47	\$2.39	\$2.33	\$2.09
Add for each additional ink color per image		\$0.70	\$0.57	\$0.39	\$0.34	\$0.28	\$0.26

For additional charges and information refer to page 58, grid C




PRICE PER PIECE - INCLUDES 1-COLOR PRINT (5R)


ITEM#	ITEM DESCRIPTION	250	500	1,000	2,500	5,000
PIT32	32 oz. Pitcher	\$5.68	\$5.45	\$5.24	\$5.07	\$4.96
PIT60	60 oz. Pitcher	\$8.14	\$7.88	\$7.60	\$7.42	\$7.32
Add for each additional ink color per image		\$1.62	\$1.16	\$0.79	\$0.70	\$0.64

For additional charges and information refer to page 58, grid C

KEEPSAKE COLLECTION

COMPOSTABLE PAPER PLATES & HOT CUPS

 = Eco Friendly Products are biodegradable or made from 100% Recycled Material. They are compostable and reusable.

 = These items are biodegradable & compostable. Made from 100% recycled fibers.



CPCS10

CPCS6

CPCR105



CPK3C10

CPK875

CPKO10



CP3C10



CP875



Recycled/Recyclable Napkins and
Compostable Cutlery & Straws options!
Napkins pgs. 6-11
Cutlery & Straws pg. 52



VW-4
VW-OS



VW-12
VW12-OS

Matching lids LHRDS-8 and LHRDS-16
on pg. 59 are fully compostable

Matching black or white lids 3079,
VWLID80Z, VWLID1020, and DL1260
on pg. 59 are fully compostable



VW BACK VIEW



PRICE PER PIECE - INCLUDES 1-COLOR PRINT (5R)

ITEM#	ITEM DESCRIPTION	250	500	1,000	2,500	5,000
CPCS6	6" Square Compostable Paper Plate	\$0.65	\$0.57	\$0.52	\$0.50	\$0.47
CPCS10	10" Square Compostable Paper Plate	\$0.93	\$0.77	\$0.71	\$0.66	\$0.65
CPCR105	10" X 5" Rectangular Compostable Paper Plate	\$0.76	\$0.63	\$0.58	\$0.54	\$0.52
CP675	6.75" Round Compostable Paper Plate	\$0.65	\$0.57	\$0.52	\$0.50	\$0.47
CPK675	6.75" Kraft Round Compostable Paper Plate	\$0.65	\$0.57	\$0.52	\$0.50	\$0.47
CP875	8.75" Round Compostable Paper Plate	\$0.85	\$0.71	\$0.64	\$0.57	\$0.53
CPK875	8.75" Kraft Round Compostable Paper Plate	\$0.85	\$0.71	\$0.64	\$0.57	\$0.53
CPC10	10" Round Compostable Paper Plate	\$0.93	\$0.77	\$0.71	\$0.66	\$0.65
CPKC10	10" Kraft Round Compostable Paper Plate	\$0.93	\$0.77	\$0.71	\$0.66	\$0.65
CP3C10	10" 3-Compartment Compostable Paper Plate	\$1.02	\$0.85	\$0.76	\$0.71	\$0.67
CPK3C10	10" Kraft 3-Compartment Compostable Paper Plate	\$1.02	\$0.85	\$0.76	\$0.71	\$0.67
CPKO10	10" Kraft Oval Compostable Paper Plate	\$0.92	\$0.77	\$0.71	\$0.66	\$0.65
VW-4	4 oz. Compostable Paper Hot Cup	\$0.65	\$0.53	\$0.47	\$0.44	\$0.42
VW-8	8 oz. Compostable Paper Hot Cup	\$0.70	\$0.59	\$0.52	\$0.46	\$0.44
VW-10	10 oz. Compostable Paper Hot Cup	\$0.72	\$0.62	\$0.55	\$0.50	\$0.48
VW-12	12 oz. Compostable Paper Hot Cup	\$0.72	\$0.62	\$0.55	\$0.50	\$0.48
VW-16	16 oz. Compostable Paper Hot Cup	\$0.75	\$0.66	\$0.54	\$0.50	\$0.47
Add for each add'l ink color -or- different second side imprint (per color/per item)		\$0.40	\$0.35	\$0.29	\$0.27	\$0.24
Add for identical second side multi color imprint (No second side charge for 1-color print)		\$0.22	\$0.20	\$0.16	\$0.15	\$0.12



Compostable Plates: For additional charges and information refer to page 58, grid E
Compostable Cups: For additional charges and information refer to page 58, grid B

PRICE PER PIECE - INCLUDES 1-COLOR PRINT (3RSTU)

ITEM#	ITEM DESCRIPTION	10,000	25,000	50,000	75,000	100,000	250,000
VW4-OS	4 oz. Compostable Paper Hot Cup	\$0.402	\$0.360	\$0.347	\$0.302	\$0.268	\$0.233
VW8-OS	8 oz. Compostable Paper Hot Cup	\$0.437	\$0.393	\$0.384	\$0.339	\$0.305	\$0.268
VW10-OS	10 oz. Compostable Paper Hot Cup	\$0.461	\$0.429	\$0.402	\$0.354	\$0.312	\$0.280
VW12-OS	12 oz. Compostable Paper Hot Cup	\$0.479	\$0.437	\$0.422	\$0.378	\$0.344	\$0.
Add for each additional ink color (No charge for second side print) 4 color process not available		\$0.020	\$0.020	\$0.020	\$0.014	\$0.011	\$0.009

For additional charges and information refer to page 59, grid I

Compostable Paper Cups
Recycled/Recyclable Napkins &
Compostable Cutlery & Straws options!

Compostable Paper Cups pgs. 32-33
Napkins pgs. 6-11
Cutlery & Straws pg. 52



PC4SC



CLPC9

CLPC9 COLOR CHART		CLPC9
Ecu		•
Black		•
Red		•
Jade Green		•
Sun Gold		•
Royal Blue		•
Purple		•
Burgundy		•



PC12SC



PC10S-OS



PC16-OS



PC16



PRICE PER PIECE - INCLUDES 1-COLOR PRINT (5R)



PRICE PER PIECE - INCLUDES 1-COLOR PRINT (3RSTU)

ITEM#	ITEM DESCRIPTION	250	500	1,000	2,500	5,000
PC4SC	4 oz. Paper Hot Cup	\$0.40	\$0.35	\$0.32	\$0.29	\$0.25
PC8SC	8 oz. Paper Hot Cup	\$0.49	\$0.42	\$0.35	\$0.33	\$0.31
CLPC9	9 oz. Colored Paper Cups	\$0.76	\$0.71	\$0.52	\$0.47	\$0.45
PC10NY	10 oz. New York Style Paper Hot Cup	\$0.49	\$0.42	\$0.35	\$0.33	\$0.31
PC10S-SC	10 oz. Squat Paper Hot Cup	\$0.49	\$0.42	\$0.35	\$0.33	\$0.31
PC12SC	12 oz. Paper Hot Cup	\$0.50	\$0.45	\$0.40	\$0.36	\$0.34
PC16SC	16 oz. Paper Hot Cup	\$0.63	\$0.49	\$0.47	\$0.46	\$0.43
Add for each additional ink color per image		\$0.40	\$0.35	\$0.29	\$0.27	\$0.24
Add for identical second side multi color prints (No second side charge for 1-color print)		\$0.22	\$0.20	\$0.16	\$0.15	\$0.12

For additional charges and information refer to page 58, grid B

ITEM#	ITEM DESCRIPTION	10,000	25,000	50,000	75,000	100,000	250,000
PC4-OS	4 oz. Paper Hot Cup	\$0.227	\$0.203	\$0.191	\$0.165	\$0.145	\$0.123
PC8-OS	8 oz. Paper Hot Cup	\$0.275	\$0.227	\$0.215	\$0.187	\$0.164	\$0.141
PC10NY-OS	10 oz. New York Style Paper Hot Cup	\$0.292	\$0.254	\$0.241	\$0.211	\$0.184	\$0.162
PC10S-OS	10 oz. Squat Paper Hot Cup	\$0.292	\$0.254	\$0.241	\$0.211	\$0.184	\$0.162
PC12-OS	12 oz. Paper Hot Cup	\$0.321	\$0.287	\$0.272	\$0.237	\$0.208	\$0.182
PC16-OS	16 oz. Paper Hot Cup	\$0.374	\$0.371	\$0.352	\$0.311	\$0.276	\$0.243
Add for each additional ink color (No charge for second side print)		\$0.020	\$0.020	\$0.020	\$0.014	\$0.011	\$0.009

4 color process not available

For additional charges and information refer to page 59, grid I



PRICE PER/M (M=THOUSAND) - INCLUDES 1-COLOR PRINT (3T2U)
SUBJECT TO +/- 10% OVER/UNDER RUN - OVERS WILL BE INVOICED

ITEM#	ITEM DESCRIPTION	50M	75M	100M	150M	250M
PC09	9 oz. Paper Hot Cup	\$218.24	\$209.79	\$157.01	\$137.36	\$123.24
PC12	12 oz. Paper Hot Cup	\$254.90	\$244.31	\$195.27	\$179.95	\$177.60
PC16	16 oz. Paper Hot Cup	\$281.06	\$270.16	\$218.95	\$202.05	\$199.71
Add for each additional ink color		\$23.29	\$17.47	\$15.14	\$12.23	\$11.35

For additional charges and information refer to page 60, grid M

COFFEE CUP SLEEVES / DOUBLE WALL INSULATED PAPER CUPS

COFFEE CUP SLEEVES / DOUBLE WALL INSULATED PAPER CUPS



CSKD

All sleeves fit PC10NY and 12oz through 16oz Paper Cups



CSWD



CSK



CSW



CSKDP



CSWDP



RWPC16

Matching Lids RDL8 and RDL1020 see page 57



ICF8S, ICF8SK



ICF16SK



Smooth Sleeves

PRICE PER PIECE - DIGITAL PRINTED (5R)

ITEM#	ITEM DESCRIPTION	250	500	1,000	2,500	5,000
*CSKD	Digital Printed Kraft Coffee Cup Sleeves	\$0.93	\$0.65	\$0.63	\$0.59	\$0.58
*CSWD	Digital Printed White Coffee Cup Sleeves	\$0.93	\$0.65	\$0.63	\$0.59	\$0.58
Add for additional second side imprint		\$0.45	\$0.44	\$0.40	\$0.36	\$0.35

* Made from 100% post-consumer recycled material

For additional charges and information refer to page 60, grid P



Smooth Sleeves

PRICE PER PIECE - INCLUDES 1-COLOR PRINT (5R)

ITEM#	ITEM DESCRIPTION	250	500	1,000	2,500	5,000
*CSK	Kraft Coffee Cup Sleeves	\$0.70	\$0.41	\$0.39	\$0.35	\$0.34
*CSW	White Coffee Cup Sleeves	\$0.70	\$0.41	\$0.39	\$0.35	\$0.34
Add for identical second side imprint		\$0.23	\$0.21	\$0.17	\$0.14	\$0.12
Add for unique second side imprint (per color)		\$0.37	\$0.35	\$0.32	\$0.31	\$0.28
Add for each additional ink color		\$0.37	\$0.35	\$0.32	\$0.31	\$0.28

* Made from 100% post-consumer recycled material

For additional charges and information refer to page 58, grid B



Dimpled Sleeves

PRICE PER PIECE - INCLUDES 1-COLOR PRINT (5T)

SUBJECT TO +/- 10% OVER/UNDER RUN - OVERS WILL BE INVOICED

ITEM#	ITEM DESCRIPTION	24,000	52,000	100,100	150,800	250,900	403,000
**CSKDP	Kraft Coffee Cup Sleeves	\$0.219	\$0.171	\$0.136	\$0.124	\$0.112	\$0.100
**CSWDP	White Coffee Cup Sleeves	\$0.219	\$0.171	\$0.136	\$0.124	\$0.112	\$0.100
Add for each additional ink color		\$0.053	\$0.035	\$0.025	\$0.021	\$0.019	\$0.016

** Made from 100% recycled material. Contains a min. of 35% post consumer material. For additional charges and information refer to page 60, grid O



PRICE PER PIECE - INCLUDES 1-COLOR PRINT (5R)

ITEM#	ITEM DESCRIPTION	250	500	1,000	2,500	5,000
ICF8S, SK	8 oz. White or Kraft Double Wall Insulated Paper Cup	\$0.73	\$0.57	\$0.51	\$0.49	\$0.46
ICF12S, SK	12 oz. White or Kraft Double Wall Insulated Paper Cup	\$0.76	\$0.60	\$0.53	\$0.51	\$0.49
ICF16S, SK	16 oz. White or Kraft Double Wall Insulated Paper Cup	\$0.79	\$0.66	\$0.55	\$0.54	\$0.52
Add for each additional ink color		\$0.40	\$0.35	\$0.29	\$0.27	\$0.24
Add for identical second side imprint (No second side charge for 1-color print)		\$0.22	\$0.20	\$0.16	\$0.15	\$0.12



PRICE PER PIECE (3R)

ITEM#	ITEM DESCRIPTION	10,000	25,000	50,000
RWPC8	8 oz. Rippled Insulated Paper Cup	\$0.45	\$0.39	\$0.38
RWPC12	12 oz. Rippled Insulated Paper Cup	\$0.59	\$0.51	\$0.47
RWPC16	16 oz. Rippled Insulated Paper Cup	\$0.65	\$0.57	\$0.53
RWPC20	20 oz. Rippled Insulated Paper Cup	\$0.74	\$0.65	\$0.57

For additional charges and information refer to page 60, grid Q

COFFEE CUP SLEEVES / DOUBLE WALL INSULATED PAPER CUPS



8J8-OS



10J10



12J12-OS



16J16-OS



= Indicates **Lightning Rush Service** available on this item

PRICE PER PIECE - INCLUDES 1-COLOR PRINT (5R)

ITEM#	ITEM DESCRIPTION	250	500	1,000	2,500	5,000
8J8	8 oz. Foam Cup	\$0.54	\$0.45	\$0.38	\$0.34	\$0.30
10J10	10 oz. Foam Cup	\$0.55	\$0.47	\$0.42	\$0.38	\$0.34
12J12	12 oz. Foam Cup	\$0.55	\$0.47	\$0.42	\$0.38	\$0.34
16J16	16 oz. Foam Cup	\$0.66	\$0.58	\$0.45	\$0.42	\$0.38
20J16	20 oz. Foam Cup	\$0.70	\$0.62	\$0.47	\$0.45	\$0.42
Add for each additional ink color per image		\$0.36	\$0.29	\$0.22	\$0.16	\$0.14
Add for identical second side multi color prints (No second side charge for 1-color print)		\$0.27	\$0.25	\$0.22	\$0.16	\$0.14

For additional charges and information refer to page 58, grid B



PRICE PER PIECE - INCLUDES 1-COLOR PRINT (3RSTU)

ITEM#	ITEM DESCRIPTION	10,000	25,000	50,000	75,000	100,000	250,000
8J8-OS	8 oz. Foam Cup	\$0.177	\$0.144	\$0.126	\$0.111	\$0.101	\$0.090
12J12-OS	12 oz. Foam Cup	\$0.205	\$0.185	\$0.162	\$0.147	\$0.135	\$0.117
16J16-OS	16 oz. Foam Cup	\$0.258	\$0.240	\$0.235	\$0.205	\$0.189	\$0.170
20J16-OS	20 oz. Foam Cup	\$0.297	\$0.273	\$0.258	\$0.231	\$0.211	\$0.190
Add for each additional ink color per image		\$0.021	\$0.021	\$0.021	\$0.014	\$0.012	\$0.009
No charge for second side prints 4 color process not available							

For additional charges and information refer to page 59, grid I



SC40SQD



SC60D

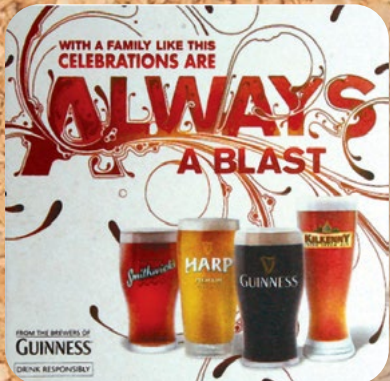
Production Notes:
Second side imprints may not line up on coasters
The shade of white coaster stock may vary by item.



SC40SQ



SC60



84GR-SQ



80GR-RD



Made from 40% recycled material

PRICE PER PIECE - DIGITAL PRINTED (5R)

ITEM#	ITEM#	DESCRIPTION	250	500	1,000	2,500	5,000
SC40SQD	SC40D	40 pt. 3.5" High Density Pulp Board Coasters: RND or SQ	\$0.61	\$0.58	\$0.51	\$0.47	\$0.46
SC60SQD	SC60D	60 pt. 3.5" High Density Pulp Board Coasters: RND or SQ	\$0.65	\$0.59	\$0.54	\$0.51	\$0.47
SC80SQD	SC80D	80 pt. 3.5" High Density Pulp Board Coasters: RND or SQ	\$0.67	\$0.60	\$0.56	\$0.53	\$0.48
SC44SQD	SC44D	40 pt. 4" High Density Pulp Board Coasters: RND or SQ	\$0.65	\$0.59	\$0.54	\$0.51	\$0.47
SC64SQD	SC64D	60 pt. 4" High Density Pulp Board Coasters: RND or SQ	\$0.67	\$0.60	\$0.56	\$0.53	\$0.48
Add for additional second side imprint			\$0.45	\$0.44	\$0.40	\$0.36	\$0.35

For additional charges and information refer to page 60, grid P



Made from 40% recycled material

PRICE PER PIECE - INCLUDES 1-COLOR PRINT (5R)

ITEM#	ITEM#	DESCRIPTION	250	500	1,000	2,500	5,000
SC40SQ	SC40	40 pt. 3.5" High Density Pulp Board Coasters: RND or SQ	\$0.38	\$0.34	\$0.27	\$0.24	\$0.22
SC60SQ	SC60	60 pt. 3.5" High Density Pulp Board Coasters: RND or SQ	\$0.41	\$0.35	\$0.31	\$0.27	\$0.24
SC80SQ	SC80	80 pt. 3.5" High Density Pulp Board Coasters: RND or SQ	\$0.44	\$0.37	\$0.32	\$0.30	\$0.25
SC44SQ	SC44	40 pt. 4" High Density Pulp Board Coasters: RND or SQ	\$0.41	\$0.35	\$0.31	\$0.27	\$0.24
SC64SQ	SC64	60 pt. 4" High Density Pulp Board Coasters: RND or SQ	\$0.44	\$0.37	\$0.32	\$0.30	\$0.25
Add for each additional ink color			\$0.23	\$0.21	\$0.17	\$0.14	\$0.12
Add for identical second side imprint			\$0.23	\$0.21	\$0.17	\$0.14	\$0.12
Add for unique second side imprint (per color)			\$0.23	\$0.21	\$0.17	\$0.14	\$0.12

For additional charges and information refer to page 58, grid B

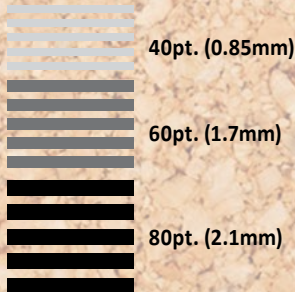


4-COLOR PROCESS PRINTING
Made from 40% recycled material

PRICE PER/M (M=THOUSAND) - MUST PRINT AS 4-COLOR PROCESS (7S)
SUBJECT TO +/- 10% OVER/UNDER RUN - OVERS WILL BE INVOICED

ITEM#	ITEM	DESCRIPTION	2.5M	5M	10M	15M	20M	25M	50M
40GR-RD 40GR-SQ	Round Square	3.5" 40 pt. High Density Pulp Board Coasters 4-color Process Print	\$374.07	\$244.59	\$238.17	\$230.90	\$203.06	\$200.94	\$184.47
44GR-RD 44GR-SQ	Round Square	4" 40 pt. High Density Pulp Board Coasters 4-color Process Print	Same Pricing for 3.5" or 4", Round or Square. Please Use Appropriate Item#						
60GR-RD 60GR-SQ	Round Square	3.5" 60 pt. High Density Pulp Board Coasters 4-color Process Print	\$397.48	\$260.53	\$253.19	\$245.20	\$214.85	\$213.70	\$196.12
64GR-RD 64GR-SQ	Round Square	4" 60 pt. High Density Pulp Board Coasters 4-color Process Print	Same Pricing for 3.5" or 4", Round or Square. Please Use Appropriate Item#						
80GR-RD 80GR-SQ	Round Square	3.5" 80 pt. High Density Pulp Board Coasters 4-color Process Print	\$477.19	\$312.65	\$310.17	\$307.13	\$303.88	\$300.88	\$275.85
84GR-RD 84GR-SQ	Round Square	4" 80 pt. High Density Pulp Board Coasters 4-color Process Print	Same Pricing for 3.5" or 4", Round or Square. Please Use Appropriate Item#						

For additional charges and information refer to page 59, grid K



Coaster thickness is approximate

4 Color Process Gang-Run Coaster Program (Only applicable to Grande Items listed on page 41)

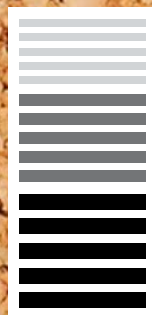
- Qualifiers for Gang-Run Program:
- * (Except orders for 2,500) All orders must be in increments of 5,000
 - * Must print using Process Colors (Cyan,Magenta,Yellow, & Black)
 - * No Spot colors or exact PMS Match
 - * ONE version of artwork per order, but second side may be different artwork as long as the front and back are the same on ALL Coasters
 - * Standard Packaging Only. Special Case Pack for orders of 2.5M (40 & 60 Point) & 5M 60 Point ~ Call for Details
 - * Artwork must be submitted at the minimum of 300 DPI file, and sized to die-line specifications found on Grid K on pg. 59.



SC64ST



SC84SQST



Coaster thickness
is approximate

Production Note:
Second side imprints may not line up on
coasters.



PRICE PER/M (M=THOUSAND) - INCLUDES 1-COLOR PRINT (5U)
SUBJECT TO +/- 10% OVER/UNDER RUN - OVERS WILL BE INVOICED

ITEM#	ITEM	DESCRIPTION	10M	25M	50M	100M	250M
SC40ST SC40SQST	Round Square	40 pt. High Density Pulp Board Coasters, 3.5"	\$190.92	\$95.37	\$75.55	\$43.07	\$34.76
SC60ST SC60SQST	Round Square	60 pt. High Density Pulp Board Coasters, 3.5"	\$204.05	\$106.86	\$85.16	\$52.77	\$44.27
SC80ST SC80SQST	Round Square	80 pt. High Density Pulp Board Coasters, 3.5"	\$229.10	\$128.05	\$116.62	\$70.73	\$58.16
SC44ST SC44SQST	Round Square	40 pt. High Density Pulp Board Coasters, 4"	\$196.43	\$103.43	\$84.48	\$52.13	\$43.94
SC64ST SC64SQST	Round Square	60 pt. High Density Pulp Board Coasters, 4"	\$209.67	\$116.59	\$96.66	\$65.06	\$56.70
SC84ST SC84SQST	Round Square	80 pt. High Density Pulp Board Coasters, 4"	\$251.35	\$148.54	\$133.19	\$87.38	\$75.21
Add for 1st side each additional color			\$69.19	\$28.06	\$12.66	\$6.68	\$2.92
Add for second side 1st common color			\$79.80	\$33.85	\$20.83	\$10.93	\$9.45
Add for 2nd side each additional common color			\$44.83	\$22.36	\$4.93	\$2.66	\$1.41
Common color=second side ink colors that are common to the first side. (If second side colors are NOT common, additional charges will apply)							

Made from 40% recycled material

For additional charges and information refer to page 59, grid L

PLASTIC PLATE COLOR CHART	CPP7				
	CPP9	WPP7	WPP9	WPP10	
Ecu	•	•			
Black	•	•			
Red	•	•			
Jade Green	•	•			
Sun Gold	•	•			
Royal Blue	•	•			
Purple	•	•			
Burgundy	•	•			
Gold	•	•			
Silver	•	•			
White		•	•	•	



CPP7



CPP9

Color Rich™ Plates
500 - 1 million pieces
As fast as 7 days!



WPP10

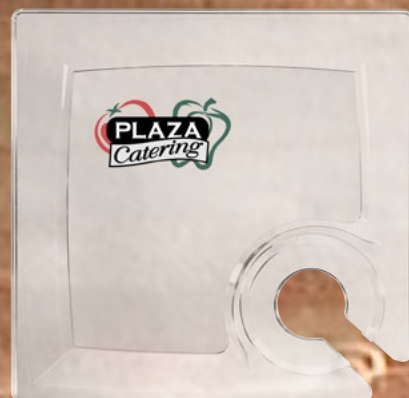


CWP7CR

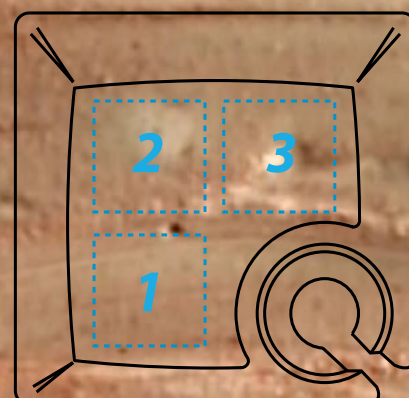


CWP7

Imprint location options for
item # MSCTL



MSCTL



Color Rich™ Plates

PRICE PER PIECE - INCLUDES FULL COLOR PRINT (5T)

ITEM#	ITEM DESCRIPTION	300	1,500	2,500	5,000	10,000
CWP7CR	7" Color Rich White Plastic Plate	\$1.51	\$1.38	\$1.31	\$1.24	\$1.22
CWP10CR	10" Color Rich White Plastic Plates	\$1.84	\$1.67	\$1.59	\$1.52	\$1.50

Must order full case quantities

For additional charges and information refer to page 58, grid E



PRICE PER PIECE - INCLUDES 1-COLOR PRINT (6R)

ITEM#	ITEM DESCRIPTION	100	250	500	1,000	2,500	5,000
CWP7	7.5" Clear Plastic Plates	\$2.53	\$2.05	\$1.88	\$1.82	\$1.73	\$1.64
CWP9	9" Clear Plastic Plates	\$2.81	\$2.33	\$2.17	\$2.06	\$2.03	\$1.94
CWP10	10.25" Clear Plastic Plates	\$3.13	\$2.67	\$2.48	\$2.40	\$2.34	\$2.23
Add for each additional ink color		\$0.66	\$0.39	\$0.37	\$0.33	\$0.32	\$0.30

For additional charges and information refer to page 58, grid E



PRICE PER PIECE - INCLUDES 1-COLOR PRINT (5R)

ITEM#	ITEM DESCRIPTION	250	500	1,000	2,500	5,000
CPP7	7" Colored Plastic Plates	\$0.64	\$0.51	\$0.461	\$0.390	\$0.378
CPP9	9" Colored Plastic Plates	\$0.90	\$0.73	\$0.674	\$0.650	\$0.615
WPP7	7" White Plastic Plates	\$0.67	\$0.57	\$0.544	\$0.520	\$0.485
WPP9	9" White Plastic Plates	\$0.95	\$0.79	\$0.709	\$0.662	\$0.615
WPP10	10.25" White Plastic Plates	\$1.09	\$0.96	\$0.851	\$0.756	\$0.685
Add for each additional ink color		\$0.39	\$0.35	\$0.317	\$0.305	\$0.283

For additional charges and information refer to page 58, grid E



PRICE PER PIECE - INCLUDES 1-COLOR PRINT (6R)

ITEM#	ITEM DESCRIPTION	100	250	500	1,000	2,500	5,000
MSCTL	8.25" Clear Plastic Square Cocktail Plate	\$3.50	\$3.11	\$2.97	\$2.91	\$2.88	\$2.86
Add for each additional ink color		\$0.63	\$0.37	\$0.35	\$0.32	\$0.31	\$0.28
Add for multiple location charge - per color		\$0.63	\$0.37	\$0.35	\$0.32	\$0.31	\$0.28

For additional charges and information refer to page 58, grid E

Compostable plates and compostable cutlery & straws options!

Compostable Plates pg. 32
Compostable Cutlery & Straws pg. 52



CPL7S

COLOR CHART PAPER PLATES		CPL7S	CPL9S
White		•	•
Black		•	•
Ecru		•	•
Red		•	•
Jade Green		•	•
Sun Gold		•	•
Royal Blue		•	•
Purple		•	•
Burgundy		•	•
Gold		•	•
Silver		•	•



CPL9S



PL9S



PL7



PL1026



PRICE PER PIECE - INCLUDES 1-COLOR PRINT (5R)

ITEM#	ITEM DESCRIPTION	250	500	1,000	2,500	5,000
CPL7S	7" White and Colored Paper Plates	\$0.51	\$0.43	\$0.394	\$0.355	\$0.335
PL9S	9" White Paper Plates (while supplies last)	\$0.83	\$0.51	\$0.50	\$0.48	\$0.47
CPL9S	9" Colored Paper Plates	\$0.71	\$0.57	\$0.512	\$0.473	\$0.433
Add for each additional ink color		\$0.37	\$0.35	\$0.32	\$0.31	\$0.28

For additional charges and information refer to page 58, grid E



PRICE PER/M (M=THOUSAND) - INCLUDES 1-COLOR PRINT (3T2U)
SUBJECT TO +/- 10% OVER/UNDER RUN - OVERS WILL BE INVOICED

ITEM#	ITEM DESCRIPTION	50M	75M	100M	150M	250M
PL7	7" White Paper Plates 14 pt.	\$176.23	\$154.00	\$146.18	\$126.92	\$115.14
PL918	9" White Paper Plates 17 pt.	\$267.88	\$221.24	\$207.28	\$180.12	\$170.65
PL1022	10.5" White Paper Plates 20 pt.	\$354.83	\$318.84	\$285.83	\$247.67	\$226.16
PL1026	10.5" White Paper Plates 26 pt.	\$375.98	\$336.20	\$301.10	\$264.05	\$238.50
Add for each additional ink color		\$23.29	\$17.47	\$15.14	\$12.23	\$11.35

For additional charges and information refer to page 60, grid N

Compostable plates and compostable cutlery & straws options!
Compostable Plates pg. 32
Compostable Cutlery & Straws pg. 52



- Available in:
- Red - approx. color match PMS 032 C
 - Orange - approx. color match PMS 1575 C
 - Lime Green - approx. color match PMS 360 C
 - Hot Pink - approx. color match PMS 213 C
 - Blue - approx. color match PMS 639 C

Great for Yogurt, Gelato, Ice Cream, & Other Desserts!



White Dessert Cups

PRICE PER PIECE - INCLUDES 1-COLOR PRINT (5R)

ITEM#	ITEM DESCRIPTION	250	500	1,000	2,500	5,000
CKDP4	4 oz. Paper Dessert Cup	\$0.61	\$0.49	\$0.42	\$0.38	\$0.37
CKDP6	6 oz. Paper Dessert Cup	\$0.61	\$0.49	\$0.42	\$0.38	\$0.37
CKDP8	8 oz. Paper Dessert Cup	\$0.61	\$0.49	\$0.42	\$0.38	\$0.37
CKDP12	12 oz. Paper Dessert Cup	\$0.63	\$0.50	\$0.44	\$0.41	\$0.38
CKDP16	16 oz. Paper Dessert Cup	\$0.68	\$0.54	\$0.49	\$0.45	\$0.44
Add for each additional ink color per image		\$0.40	\$0.35	\$0.29	\$0.27	\$0.24
Add for identical second side multi color prints (No second side charge for 1-color print)		\$0.22	\$0.20	\$0.16	\$0.15	\$0.12

For additional charges and information refer to page58, grid E



Colored Dessert Cups

PRICE PER PIECE - INCLUDES 1-COLOR PRINT (5R)

ITEM#	ITEM DESCRIPTION	250	500	1,000	2,500	5,000
CKDPC4	4oz Paper Dessert Cup	\$0.64	\$0.51	\$0.44	\$0.41	\$0.40
CKDPC6	6 oz. Paper Dessert Cup	\$0.64	\$0.51	\$0.44	\$0.41	\$0.40
CKDPC8	8 oz. Paper Dessert Cup	\$0.64	\$0.51	\$0.44	\$0.41	\$0.40
CKDPC12	12 oz. Paper Dessert Cup	\$0.67	\$0.52	\$0.46	\$0.43	\$0.41
CKDPC16	16 oz. Paper Dessert Cup	\$0.71	\$0.58	\$0.51	\$0.47	\$0.46
Add for each additional ink color per image		\$0.40	\$0.35	\$0.29	\$0.27	\$0.24
Add for identical second side multi color prints (No second side charge for 1-color print)		\$0.22	\$0.20	\$0.16	\$0.15	\$0.12

For additional charges and information refer to page 58, grid E



INSULATED COFFEE AND PARTY TUMBLERS

DOUBLE-WALL INSULATED COFFEE TUMBLERS



CFT-20

DOUBLE WALL PARTY CUPS

Top shelf dishwasher safe
Suitable for hot or cold beverages



PDW16S

Colors:

- White
- Black
- Royal Blue
- Navy
- Turquoise
- Purple
- Red
- Maroon
- Green
- Yellow
- Neon Orange
- Neon Pink
- Neon Lime



LDPDW
Lids sold separately
See pg. 59

PRICE PER PIECE - INCLUDES 1-COLOR PRINT (5R)

ITEM#	ITEM DESCRIPTION	50	100	250	500	1000
CFT-20	20oz Double-wall Insulated Coffee Tumbler	\$19.22	\$17.94	\$16.67	\$15.79	\$15.51
Add for each additional ink color per image		\$0.58	\$0.40	\$0.35	\$0.29	\$0.27
Add for identical second side multi color prints (No second side charge for 1-color print)		\$0.31	\$0.22	\$0.20	\$0.16	\$0.14

For additional charges and information refer to page 58, grid D

PRICE PER PIECE - INCLUDES 1-COLOR PRINT (6R)

ITEM#	ITEM DESCRIPTION	300	500	1,000	2,500	5,000
PDW16S	16oz. Double Wall Party Cup	\$2.75	\$2.49	\$2.43	\$2.32	\$2.03
Add for each additional ink color per image		\$0.40	\$0.35	\$0.29	\$0.27	\$0.24
Add for identical second side multi color prints (No second side charge for 1-color print)		\$0.23	\$0.20	\$0.16	\$0.15	\$0.12

For additional charges and information refer to page 58, grid D



KITS

YOU DREAM IT. WE'LL PACK IT.

Our convenient kits will make your next event a hit!

- Ease of mind in event planning
- Affordable, customizable, practical
- All-in-one carrying case
- Large variety of product options

Custom Quotes Available to Meet Every Specific Request

Great for wine tastings, golf outings, corporate BBQs, sporting, tailgating & school events, office party in a box, lunch & learn programs, and so much more!





PSB



Compostable Straws



COMPSTRAW



Compostable Cutlery



TCC
Table Covers
Printing not available.

COLOR COLLECTION COLOR CHART	CCF50	CCK50	CCS50	TCC
Ecru	•	•	•	•
Black	•	•	•	•
Red	•	•	•	•
Jade Green	•	•	•	•
Hunter Green	•	•	•	•
Sun Gold	•	•	•	•
Purple	•	•	•	•
Burgundy	•	•	•	•
White	•	•	•	•



PRICE PER 300 (T)

ITEM#	ITEM DESCRIPTION	300
COMPSTRAW	8 1/4" Compostable Straw	\$17.83



PRICE PER PIECE (5T)

ITEM#	ITEM DESCRIPTION	250	500	1,000	2,500	5,000
BCN2F	Compostable Forks	\$0.27	\$0.26	\$0.20	\$0.19	\$0.15
BCN2K	Compostable Knives	\$0.27	\$0.26	\$0.20	\$0.19	\$0.15
BCN2S	Compostable Spoons	\$0.27	\$0.26	\$0.20	\$0.19	\$0.15
CCF50	Colored Plastic Forks	\$0.24	\$0.23	\$0.17	\$0.16	\$0.11
CCK50	Colored Plastic Knives	\$0.24	\$0.23	\$0.17	\$0.16	\$0.11
CCS50	Colored Plastic Spoons	\$0.24	\$0.23	\$0.17	\$0.16	\$0.11

Production Note: Style of cutlery may vary. Please call for current sample if this is a concern



PRICE PER PIECE (6T)

ITEM#	ITEM DESCRIPTION	10	25	50	100	250	500
TCC	Table Covers 54" x 108" <i>Printing not available</i> Tissue Paper w/Poly Backing	\$5.46	\$5.26	\$5.01	\$4.68	\$4.24	\$3.90



PRICE PER/M (M=THOUSAND) - INCLUDES 1-COLOR PRINT (5T)

ITEM#	ITEM DESCRIPTION	20M	40M	60M	100M	200M
PSB	Self-Adhesive Napkin Bands 1 1/2" x 4 1/4"	\$10.58	\$10.23	\$9.53	\$9.03	\$8.33
Add for each additional ink color		\$8.31	\$7.08	\$4.13	\$2.77	\$1.47

Full bleeds are possible: Call for details.

For additional charges and information refer to page 59, grid J



ITEM#	ITEM DESCRIPTION	PRICE PKG OF 100 (T)
FKBL	Black 4.2" Tasting Fork	\$9.90
FKCL	Clear 4.2" Tasting Fork	\$9.90
SPBL	Black 4.2" Tasting Spoon	\$9.90
SPCL	Clear 4.2" Tasting Spoon	\$9.90

BIKE BOTTLES & TUMBLERS

Clear Contemporary Bottle
with sipper lid & straw



CB-32

FB-32 Infuser

CB-32 Colors:
Blue
Green
Purple
Red
Smoke

Double Wall Polypropylene Tumbler
with snap on lid & straw



BT16

BT16 Colors:
Smokey Quartz
Ruby Red
Purple Violet
Spring Green



Bike Bottle



GPC-28

Poly-Clear™
Gripper Bottle

BOTTLE
Purple
Aqua
Green
Red
Blue
Lime
Clear
Smoke

CAP
Purple
Black
Green
Red
Blue
Black
Clear
Smoke



All items are



Push/Pull Sipper Cap

BB-22 Colors:
White
Clear
Translucent Blue
Translucent Green
Translucent Red



BB-22

On white & clear BB-22 bottles there
is a choice of the push-pull lid color.
Please choose from white, black,
red, or blue. All other translucent
BB-22 bottles come with matching
translucent lids only.



PRICE PER PIECE - INCLUDES 1-COLOR PRINT (5R)

ITEM#	ITEM DESCRIPTION	100	250	500	1,000	2,500
CB-32	Clear Contemporary Bottles with lid and straw	\$4.98	\$4.68	\$4.33	\$4.09	\$4.01
FB-32	Basket Infuser for CB-32	\$0.87	\$0.87	\$0.87	\$0.87	\$0.87 (T)
GPC-28	Poly-Clear™ Gripper Bottles -Discontinued/while supplies last	\$2.47	\$2.35	\$2.21	\$2.09	\$2.04



PRICE PER PIECE - INCLUDES 1-COLOR PRINT (6R)

ITEM#	ITEM DESCRIPTION	100	250	500	1,000	2,500	5,000
BT16	16 oz. Double Wall Tumbler w/ Snap on Lid & Straw	\$2.60	\$2.42	\$2.36	\$2.25	\$2.19	\$2.14
Add for each additional ink color per image		\$0.58	\$0.40	\$0.35	\$0.29	\$0.27	\$0.24
Add for identical second side multi color prints (No second side charge for 1-color print)		\$0.31	\$0.22	\$0.20	\$0.16	\$0.15	\$0.12



PRICE PER PIECE - INCLUDES 1-COLOR PRINT (5R)

ITEM#	ITEM DESCRIPTION	100	250	500	1,000	2,500
BB-22	22 oz. Bike Bottle w/push-pull lid-Discontinued/while supplies last	\$1.94	\$1.81	\$1.69	\$1.59	\$1.56

Production Note: While every effort is made to maintain quality, the nature of plastic bottles is such that they may exhibit scratches from packaging or shipping.
This is normal and NOT a defect.

HAND WASH ONLY.

For additional charges and information refer to page 60, grid D



	Lid Item #	Fits Item#	Colors	Case/Sleeve	Price Per Sleeve
White Double Wall Party Cup Lid	LDPDW	PDW16	White	1000/100	\$ 0.63(T)each
White Lift-lock Tear-back Lids	8FTL	8J8	White	1000/100	\$ 6.65(T)
	10FTL	10J10		1000/100	\$ 6.65(T)
	12FTL	12J12		1000/100	\$ 6.65(T)
Translucent Lift-Lock Lids	16FTLS	16J16, 20J16	Translucent	1000/100	\$ 6.65(T)
White Dome Sip-Thru Lids	8EL	8J8	White	1000/100	\$ 6.65(T)
	10EL	10J10		1000/100	\$ 8.22(T)
	12EL	12J12		1000/100	\$ 8.22(T)
	16EL	16J16, 20J16		1000/100	\$ 8.22(T)
Translucent X-Slot Lids	16SL	16J16, 20J16	Translucent	1000/100	\$ 6.64(T)
6 oz. Clear Plastic Dome-Lids	CKDL96	CKDP6	Clear	50/Sleeve	\$12.86(T)/100
8 oz. Clear Plastic Dome-Lids	CKDL95	CKDP8	Clear	50/Sleeve	\$14.12(T)/100
12 oz. Clear Plastic Dome-Lids	CKDL106	CKDP12	Clear	50/Sleeve	\$16.71(T)/100
12 oz. Clear Plastic Flat Lids	CKFL12	CKDP12	Clear	50/Sleeve	\$12.82(T)/100
16 oz. Clear Plastic Dome- Lids	CKDL116	CKDP16	Clear	50/Sleeve	\$17.98(T)/100
16 oz. Clear Plastic Flat Lids	CKDL112	CKDP16	Clear	50/Sleeve	\$14.12(T)/100
Stadium Cup Lids	SSL12	TSS12	Frosted/Red/Blue		\$.12(T)
	SSL16/22	TSS17, TSS22, TSC17, MC16, F16SC, F22SC	Frosted/Red/Blue/Black		\$.12(T)
	SSL32	TSS32	Red/Blue/Black		\$.12(T)
Clear Coin Slot Lid	CBL1622	TSS17, TSS22, F16SC, F22SC	Clear		\$.32(T)
Clear Plastic Cold Food Container	PL4	P55	Clear	500/100	\$ 6.24(T)
Translucent X-Slot Lids	XS7	GC7	Translucent	1000/100	\$ 9.16(T)
Clear X-Slot Lids	XS12/20	EL12, EL20, EL9OF	Clear	1000/100	\$12.18(T)
	XS16/24	TD-24, EL16		1000/100	\$12.18(T)
Clear High Dome Lids w/Hole	DL16/24	TD-24	Clear	1000/100	\$14.26(T)
Greenware PLA X-Slot Compostable*	GXS9/10	GC10	Clear	1000/100	\$12.18(T)
	GXS12/20	GC12S, GC9OF		1000/100	\$12.18(T)
	GXS16/24	GC16S, GC20		1000/100	\$13.28(T)
Greenware PLA Dome Compostable*	GDL12/20	GC12S, GC9OF	Clear	1000/100	\$16.61(T)
	GDL16/24	GC16S, GC20		1000/100	\$16.61(T)
Translucent Straw-Slot Lids	XXL-78B	XLT10	Translucent	1000/100	\$13.14(T)
Translucent Straw-Slot Lids	XXL-94D	XLT12, XLT14, XLT1618, XLT20	Translucent	1000/100	\$12.66(T)
Clear Straw-Slot Lids	XXL-105J	XLT24	Clear	1000/100	\$14.25(T)
White Dome Sip-Thru Lids	3080	VW8, VW8-OS, PC09, CLPC9, ICF8S	White	1000/100	\$10.15(T)
	30161	ICF12S, ICF16S	White	1000/100	\$10.15(T)
Black Dome Sip-Thru Lids	3079	ICF8S	Black	1000/100	\$10.15(T)
	30151	VW8, VW8-OS, PC09, CLPC9, ICF12S, ICF16S	Black	1000/100	\$10.15(T)
Opaque White Dome Sip-Thru Compostable*	VWLID8OZ	VW8, VW8-OS	White	1000/50	\$12.10(T)/100
	VWLID1020	VW10, VW10-OS, VW12, VW12-OS, VW16	White	1000/50	\$13.04(T)/100
Black Dome Sip-Thru Compostable*	VWLID8OZB	VW8, VW8-OS	Black	1000/50	\$12.10(T)/100
	VWLID1020B	VW10, VW10-OS, VW12, VW12-OS, VW16	Black	1000/50	\$13.04(T)/100
White Dome Sip-Thru Lids	DL810	PC8SC, PC8-OS	White	1000/50	\$11.43(T)/100
	DL1260	VW10, VW10-OS, VW16, VW20, PC10SC, PC10-OS, PC12SC, PC12-OS, PC16SC, PC16-OS	White	1000/50	\$ 8.17(T)/100
White Tear-Back Lids	TBL810	PC8SC, PC8-OS	White	1000/100	\$ 5.30(T)
	TBL10	PC10NY (Only)		1000/100	\$ 6.54(T)
	TBL1260	PC10S-SC, PC10S-OS, PC12SC, PC12-OS, PC16SC, PC16-OS, PC20SC		1000/100	\$ 6.65(T)
White Tear-Back Lids	HL1026Z	PC12, PC16	White	1000/100	\$56.90(T)/cs*
White Dome Sip-Thru Lids	HLD1026Z	PC12, PC16	White	1000/100	\$86.22(T)/cs*
Rippled 8 oz. Insulated Paper Cup Lid	RDL8	RWPC8	White, Black	1000/case	\$101.06 (T)/cs*
Rippled 10-20 oz. Ins. Paper Cup Lid	RDL1020	RWPC10-20	White, Black	1000/case	\$94.76 (T)/cs*

* COMPOSTABLE LID

* PER CASE



ADDITIONAL CHARGES & INFORMATION

A	
STANDARD LEAD-TIME	5 business days after proof approval (up-to 5M)
PRINT REGISTRATION	On 2 color imprints, please space colors 1/4" to allow 1/8" max. movement between each color (tight registration is not possible due to movement on press)
RUSH	\$40.00(V) per item (4 business days after proof approval)
DOUBLE RUSH	\$55.00(V) per item (2-3 business days after proof approval)
LIGHTNING RUSH	\$80.00(v) per item (24hr turn-around) * not available on colored napkins. See page 1 for requirements
PRESS STOPS	\$30.00(v) per press stop (to change ink color or design)
SPECIAL PACKAGING	\$0.40(V) per package (10-50 count poly bag)
SET-UP CHARGE	\$40.00(v) per color/ per image
PMS COLOR INK MIX CHARGE	\$25.00(v) per order * pms match not possible on colored napkins
METALLIC INK UP-CHARGE	\$15.00(v) per order
PROOFS: (Fax or electronic)	no charge for the first + one revision. (24 hour lead time)
PRODUCTION PROOFS	\$25.00(v) per color + set-up charge (5 business day lead-time)

C	
STANDARD LEAD-TIME	5 business days after proof approval (up-to 5m)
PRINT REGISTRATION	allow up-to 1/16" maximum movement between colors
RUSH	\$40.00(v) per item (4 business days after proof approval)
DOUBLE RUSH	\$55.00(v) per item (2-3 business days after proof approval)
LIGHTNING RUSH	not available
PRESS STOPS	\$30.00(v) per press stop (to change ink color or design)
SPECIAL PACKAGING	not available
SET-UP CHARGE	\$40.00(v) per color / per image
PMS COLOR INK MIX CHARGE	\$25.00(v) per order not all pms #s are available on colored cups
METALLIC INK UP-CHARGE	\$15.00(v) per order
PROOFS: (Fax or electronic)	no charge for the first + one revision. (24 hour lead time)
PRODUCTION PROOFS	\$25.00(v) per color + set-up charge (5 business day lead-time)

E	
STANDARD LEAD-TIME	5 business days after proof approval (up-to 5m)
PRINT REGISTRATION	allow up-to 1/16" maximum movement between colors
RUSH	\$40.00(v) per item (4 business days after proof approval)
DOUBLE RUSH	\$55.00(v) per item (2-3 business days after proof approval)
LIGHTNING RUSH	not available
PRESS STOPS	\$30.00(v) per press stop (to change ink color or design)
SPECIAL PACKAGING	\$0.40(v) per package (10-50 count poly bag)
SET-UP CHARGE	\$40.00(v) per color / per image * item MSCCTL per color / per image / per location
PMS COLOR INK MIX CHARGE	\$25.00(v) per order
METALLIC INK UP-CHARGE	\$15.00(v) per order
PROOFS: (Fax or electronic)	no charge for the first + one revision. (24 hour lead time)
PRODUCTION PROOFS	\$25.00(v) per color + set-up charge (5 business day lead-time)

B	
STANDARD LEAD-TIME	5 business days after proof approval (up-to 5m)
PRINT REGISTRATION	allow up-to 1/16" maximum movement between colors
RUSH	\$40.00(v) per item (4 business days after proof approval)
DOUBLE RUSH	\$55.00(v) per item (2-3 business days after proof approval)
LIGHTNING RUSH	\$80.00(v) per item (24hr turn-around) *available on several colors TSS-17 smooth stadium cups and Petite line Easyline cups. See page 1 for requirements
PRESS STOPS	\$30.00(v) per press stop (to change ink color or design)
SPECIAL PACKAGING	\$0.40(v) per package (10-50 count poly bag)
SET-UP CHARGE	\$40.00(v) per color / per image
PMS COLOR INK MIX CHARGE	\$25.00(v) per order not all pms #s are available on colored cups
METALLIC INK UP-CHARGE	\$15.00(v) per order
PROOFS: (Fax or electronic)	no charge for the first + one revision. (24 hour lead time)
ADDITIONAL SIDE	\$.20 additional per item
PRODUCTION PROOFS	\$25.00(v) per color + set-up charge (5 business day lead-time)

D	
STANDARD LEAD-TIME	5 business days after proof approval (up-to 5m)
PRINT REGISTRATION	allow up-to 1/16" maximum movement between colors
RUSH	\$40.00(v) per item (4 business days after proof approval)
DOUBLE RUSH	\$55.00(v) per item (2-3 business days after proof approval)
LIGHTNING RUSH	not available
PRESS STOPS	\$30.00(v) per press stop (to change ink color or design)
SPECIAL PACKAGING	not available
SET-UP CHARGE	\$40.00(v) per color / per image
PMS COLOR INK MIX CHARGE	\$25.00(v) per order not all pms #s are available on colored cups
METALLIC INK UP-CHARGE	\$15.00(v) per order
PROOFS: (Fax or electronic)	no charge for the first + one revision. (24 hour lead time)
PRODUCTION PROOFS	\$25.00(v) per color + set-up charge (5 business day lead-time)



ADDITIONAL CHARGES & INFORMATION

F	
STANDARD LEAD-TIME	30 business days after proof approval (up-to 120m)
PRINT REGISTRATION	1/64" movement between each color
RUSH SERVICE	\$125.00(v)-\$375.00(v), call for availability
PRESS STOPS	(available on orders of 30m min. 15m min per press stop) \$75.00(v) to change first design or ink color \$31.25(v) each additional design or ink color
SPECIAL PACKAGING	call for a quote
4-COLOR PROCESS	4 color process imprints will require a mandatory pre-production proof for color match at press. charges will apply. 30m minimum. white only
SET-UP CHARGE	\$40.00(v) per color/ per image
PMS COLOR INK MIX CHARGE	\$25.00(v) per order
METALLIC INK UP-CHARGE	\$3.00(v) per thousand
PROOFS: (Fax or electronic)	no charge for the first + one revision. (24 hour lead time)
PRODUCTION PROOF:	\$62.50 (v) per color + set-up charge (10-15 business day lead-time)

H	
STANDARD LEAD-TIME	30 business days after proof approval (up-to 120m)
PRINT REGISTRATION	1/64" movement between each color
RUSH SERVICE	\$125.00(v)-\$375.00(v), call for availability
PRESS STOPS	(available on orders of 30m min. 15m min per press stop) \$75.00(v) to change first design or ink color \$31.25(v) each additional design or ink color
SPECIAL PACKAGING	call for a quote
4-COLOR PROCESS	not available
SET-UP CHARGE	\$40.00(v) per color/ per image
PMS COLOR INK MIX CHARGE	\$25.00(v) per order pms match not possible on colored napkins.
METALLIC INK UP-CHARGE	\$3.00(v) per thousand
PROOFS: (Fax or electronic)	no charge for the first + one revision. (24 hour lead time)
PRODUCTION PROOFS:	call for a quote

J	
STANDARD LEAD-TIME	15 business days after proof approval
PRINT REGISTRATION	allow up-to 1/64" movement between colors
RUSH SERVICE	not available
PRESS STOPS	quoted upon request & will add to lead-time
SPECIAL PACKAGING	not available
SET-UP CHARGE	\$70.00(v) per color/ per image
PMS COLOR INK MIX CHARGE	\$25.00(v) per order
METALLIC INKS	not available
PROOFS: (Fax or electronic)	no charge for the first + one revision. (2-3 business day lead time)
PRODUCTION PROOFS	not available

L	
STANDARD LEAD-TIME	15 business days after proof approval (up-to 120m)
PRINT REGISTRATION	allow up to 1/64" movement between ink colors
RUSH SERVICE	call for quote
PRESS STOPS	call for quote
SPECIAL PACKAGING	call for quote
SET-UP CHARGE	\$70.00(v) per color/ per image
PMS COLOR INK MIX CHARGE	\$25.00(v) per order
PROOFS: (Fax or electronic)	no charge for the first + one revision. (2-3 business day lead time)
PRODUCTION PROOFS:	call for quote

G	
STANDARD LEAD-TIME	30 business days after proof approval (up-to 120m)
PRINT REGISTRATION	1/64" movement between each color
RUSH SERVICE	\$125.00(v)-\$375.00(v), call for availability
PRESS STOPS	(available on orders of 30m min. 15m min per press stop) \$75.00(v) to change first design or ink color \$31.25(v) each additional design or ink color
SPECIAL PACKAGING	call for a quote
4-COLOR PROCESS	not available
SET-UP CHARGE	\$40.00(v) per color/ per image
PMS COLOR INK MIX CHARGE	\$25.00(v) per order
METALLIC INK UP-CHARGE	\$3.00(v) per thousand
PROOFS: (Fax or electronic)	no charge for the first + one revision. (24 hour lead time)
PRODUCTION PROOF:	\$62.50 (v) per color + set-up charge (10-15 business day lead-time)

I	
STANDARD LEAD-TIME	10 business days after proof approval (up-to 100m)
PRINT REGISTRATION	1/64" maximum movement between each color
RUSH SERVICE	approx. \$125.00(v)-\$250.00(v) per order
PRESS STOPS	\$60.00(v) per press stop 15m minimum (to change ink color or design)
SPECIAL PACKAGING	\$0.40(v) per package (10-50 count poly bag)
SET-UP CHARGE	\$70.00(v) per color/ per image
PMS COLOR INK MIX CHARGE	\$25.00(v) per order
METALLIC INK UP-CHARGE	\$3.00(v) per thousand
PROOFS: (Fax or electronic)	no charge for the first + one revision. (24 hour lead time)
PRODUCTION PROOF	\$125.00(v) per color + set-up charges (10-15 business day lead-time)

K	
STANDARD LEAD-TIME	15-20 business days after proof approval
PRINT REGISTRATION	allow up to 1/64" movement between ink colors
RUSH SERVICE	call for availability
PRESS STOPS	not available
SPECIAL PACKAGING	call for quote
SET-UP CHARGE	\$130.00(v) flat fee
PMS COLOR INK MIX CHARGE	not available
METALLIC INK UP-CHARGE	not available
PROOFS: (Fax or electronic)	no charge for the first + one revision. (2-3 business day lead time)
PRODUCTION PROOFS:	not available
DIE LINE SPECS:	
3.5" RD:	3.25" LIVE COPY, 3.5" DIE CUT, 3.75" BLEED
3.5" SQ:	3.25" LIVE COPY, 3.5" DIE CUT(.125" CORNER RADIUS), 3.75" BLEED
4" RD:	3.75" LIVE COPY, 4" DIE CUT, 4.25" BLEED
4" SQ:	3.75" LIVE COPY, 4" DIE CUT(.375" CORNER RADIUS), 4.25" BLEED



ADDITIONAL CHARGES & INFORMATION

M	
STANDARD LEAD-TIME	6-8 week lead-time after proof approval
PRINT REGISTRATION	allow up-to 1/64" movement between colors
RUSH SERVICE	not available
PRESS STOPS	not available
SPECIAL PACKAGING	quoted upon request & will add to lead-time
4-COLOR PROCESS	(100m min)4-color process imprints will require a mandatory color correct proof for color match at press. \$475.00(z)
SET-UP CHARGE	\$70.00(v) per color/ per image
PMS COLOR INK MIX CHARGE	\$25.00(v) per order
METALLIC INKS	not available
PROOFS: (Fax or electronic)	no charge for the first + one revision. (2-3 business day lead time)
PRODUCTION PROOFS	not available



O	
STANDARD LEAD-TIME	6-8 week lead-time
PRINT REGISTRATION	allow up-to 1/64" movement between colors
4-COLOR PROCESS	4-color process imprints will require a mandatory color correct proof for color match at press \$475.00 (z).
PRODUCTION PROOF	not available
SET-UP CHARGE	\$70.00(v) per color/ per image
PMS COLOR INK MIX CHARGE	\$25.00(v) per order
Metallic Inks	not available
PROOFS: (Fax or electronic)	no charge for the first + one revision. (5 business day lead time)




P	
STANDARD LEAD-TIME	5 business days after proof approval
RUSH SERVICE	not available
PRESS STOPS	not available
SPECIAL PACKAGING	quoted upon request & will add to lead-time
WHITE INK ON KRAFT COFFEE SLEEVES	\$0.20 (r) per side
DIGITAL SET-UP CHARGE	\$40.00(v) per image
FULL BLEED COVERAGE	\$0.20 (r) per piece
METALLIC INKS	not available
PROOFS: (Fax or electronic)	no charge for the first + one revision. (2-3 business day lead time)
PRODUCTION PROOFS	Call for quote

Q	
STANDARD LEAD-TIME	4 weeks after proof approval
RUSH SERVICE	not available
PRESS STOPS	not available
SET-UP CHARGE	\$50.00(v) per image
METALLIC INKS	not available
PROOFS: (Fax or electronic)	no charge for the first + one revision. (2-3 business day lead time)
PRODUCTION PROOFS	Call for availability




N	
STANDARD LEAD-TIME	6 week lead-time
PRINT REGISTRATION	allow up-to 1/64" movement between colors
RUSH SERVICE	call for availability and pricing
PRESS STOPS	not available
SPECIAL PACKAGING	quoted upon request & will add to lead-time
4-COLOR PROCESS (PLATES ONLY)	4-color process imprints will require a mandatory color correct proof for color match at press \$475.00 (z).
SET-UP CHARGE	\$70.00(v) per color/ per image
PMS COLOR INK MIX CHARGE	\$25.00(v) per order
METALLIC INK UP-CHARGE	\$3.00(v) per thousand
PROOFS: (Fax or electronic)	no charge for the first + one revision. (2-3 business day lead time)
PRODUCTION PROOFS	not available


ENVIRONMENTAL LOGOS






Not harmful to the environment. Biodegradable, compostable, reusable, or made from 100% Recycled Material. Doesn't contribute to air, water and land pollution.




Free of Bisphenol A




Compostable



% of Recycled Content




REUSABLE




PETE

Recyclable, contains PETE or PET (Polyethylene Terephthalate).




PP

Recyclable, contains PP (Polypropylene).



PS

Contains PS (Polystyrene) (Styrofoam).



OTHER

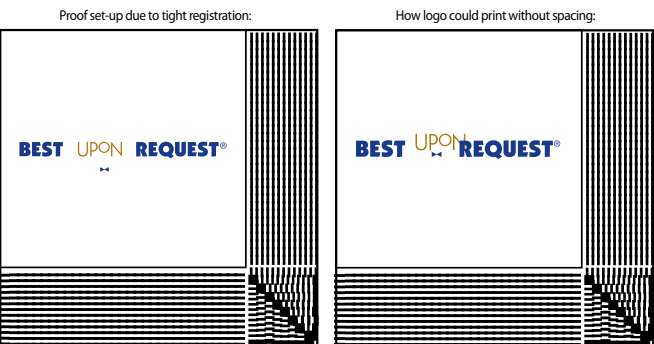
Recyclable, contains a mix of plastics that include polycarbonate.

Tight Registration

One of the challenges of printing 2-color imprints on our low quantity Petite Line Napkins is registering artwork with colors that are too close together.

We require at least a 1/4" space between each imprint color.

This is how the customer wanted the art to appear:
BESTUPONREQUEST®



Logo is set up as shown above in order to help prevent the movement of each ink color from overlapping each other as shown on the right.

We recommend printing this logo in one color as below:

BESTUPONREQUEST®

Colored Ink on Colored and Kraft Products

Non-opaque ink is used when printing napkins. The color of the napkin shows through the ink, which is why we are unable to guarantee exact color match. We only recommend printing black, metallic gold, or metallic silver inks on colored napkins. Another alternative is to print a foil imprint (see foil stamping below). If printing regular PMS ink colors on colored products, we suggest a pre-production proof to be done if you are concerned.



This is a sample of how the color of inks can vary when printed on colored products. This is not an exact representation. This is simply meant to explain why we do not guarantee or recommend printing all PMS colors on colored products. Please visit www.tkcups-sorgs.com for our list of recommended inks to print on colored products.

Foil Stamping

Foil imprints can range in quality. Foil stamping can produce jagged imprint edges. We do not recommend foil when printing artwork with small details because they may fill in or drop off at press. Foil may rub off or flake, particularly when wet.



Digital Printing

Is an ink jet process that uses CMYK, otherwise known as 4-color process (4CP). It is perfect for smaller quantities, photo replication, and replication of special effects such as shadows, highlights, and dramatic contrasts. This process can hold great detail, however it is not ideal for Pantone color matching. All PMS/spot color logos are converted to 4CP. Most Pantone colors will appear different when converted to 4CP. This is not considered a defect.



Example of digital printed coffee sleeve

ARTWORK SPECIFICATIONS

ACCEPTABLE FILE FORMATS: Vector art files only please (AI, PDF, or EPS). Raster or placed images (JPEG, TIF, or PS) will print rough and jagged and produce unsatisfactory results.

-E-mail artwork to *artwork@tkcups-sorgs.com*. If your file is too large to e-mail, send it to us using Dropbox or your choice of file transfer options.

-When submitting artwork via email indicate your purchase order number and company name in the subject line. Within the body of the e-mail please include the sender's full name and contact information, the desired PMS colors, image placement, image size and any other special requests (example: typesetting or clip art).

-Convert CMYK art to spot colors (PMS #s) unless you are requesting a CMYK print job.

COLOR REGISTRATION ON PETITE LINE NAPKINS:

1/4" space between colors is required as each color will shift up to 1/8" in any direction at press. Art files submitted with different colors touching or separated less than 1/4" will be returned for an art revision.

COMMON ARTWORK ERRORS:

IMAGE SET-UP NOT INDICATED

If the imprint size/location is not indicated on the purchase order or artwork file, we will place the art at our standard (straight and center) maximum imprint area.

MISSING FONTS

Text must be saved as outlines as we may not have the font you used. Art with text not saved as outlines will be returned for a revision.

MISSING IMAGES

All images used in a file should be embedded rather than linked.

INK COLOR NOT INDICATED

If the ink PMS color is not indicated in the purchase order or artwork file, we will select our closest stock ink color. PMS matching is available for \$25.00 (v).

DISCLAIMERS:

PETITE LINE: The direction of a second side imprint is **not guaranteed** to match the direction of the first side on Petite line coasters.

GRANDE LINE: Up to 4 colors on second side and full bleed available only on Grande Line and Digital coasters.

IMPRINT LIMITATIONS ON PETITE LINE CUPS: Cups are both a rounded and tapered surface. Printed circles may appear slightly egg shaped, squares and rectangles may appear slightly trapezoidal, and straight lines or lines of text may appear slightly bowed. Many factors can contribute to this distortion, with the size of the imprint being the most common.

PRODUCT COLOR VARIATIONS: Paper will vary slightly in degree of "Brightness Level" from lot to lot. Therefore, some lots may appear to be a brighter shade of white than others. Also, colored napkins are dyed tissue and shades or napkin color can vary from lot to lot as well. These facts are especially important to note in regard to repeat orders and/or ensembles of different products. Colored plastic items may also vary in color from lot to lot.

REGISTRATION OF REVERSES WITH 2 OR MORE COLORS

Due to our printing process we are not able to guarantee registration throughout the entire printing run when a reverse out area intersects 2 or more colors. Example of the reverse through 2 or more colors.



art provided



possible registration issue

FONTS

All fonts must be 9 pts. or greater as smaller font sizes may fill in while printing. Serif and script fonts, reverse type, or type on fluted cups must be 10 pts. or greater. Each print job's fonts are assessed on an individual basis. Often a slight stroke weight will be added to the font to avoid printing issues. Save all type as outlines.

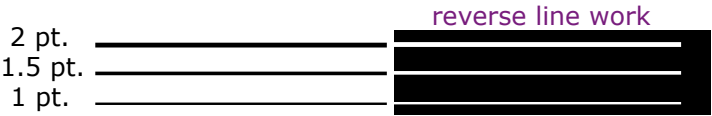
San-Serif font:	Script font:	Serif font:
Helvetica 10 pt	<i>Mineral 10 pt</i>	Times 10 pt
Helvetica 9 pt		

SCREENS/HALFTONES AND GRADIENTS

Will not be accepted as these images are made up of a series of dots rather than a continuous tone and may print dotted, drop off or fill in, and have jagged edges. Adjust halftones and gradients to 100% spot color

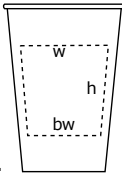
LINE WEIGHTS

Thin lines under 1 pt. do not print well on our products, and will tend to fill in or drop off at press. We recommend using a 1.5 pt. line weight or greater. For reverse line work a 2 pt. line weight or greater is recommended. In order to achieve a quality imprint we will alter line weights received under our minimum requirement if it does not compromise the overall look of the artwork.



PETITE LINE CUP IMPRINT AREA

The maximum imprint area is determined by a top width x height x bottom width. By using the tapered imprint area the distortion is reduced. All images are placed at maximum imprint size in the center of cup unless another placement is requested. This does not apply to 1-color wrap imprints on applicable products.



INK ADHESION:

Plastic bottles, cups, and plates are sold as disposable and for one time use only. Some cups are stamped as residential top rack dishwasher safe. However, due to environmental variables beyond our control, the imprint is not guaranteed to stay on.

INK ON KRAFT OR COLORED PRODUCTS: Please see our website www.tkcups-sorgs.com for a list of ink colors that may work on colored products. PMS ink mix charge may apply.

STOCK INK COLORS:

White	Black	430	PMS Yellow	123	021	168	477	
Warm Red	032	186	216	208	189	Rubine Red	Rhodamine Red	PMS Purple
355	342	PMS Green	321	Process Blue	Reflex Blue	072	281	PMS Violet

ORDERING INFORMATION

All purchase orders must have the following:

- Item number(s)
 - Item description(s) (including item color +/- or style)
 - Imprint color(s) with PMS#, standard ink or foil color (whichever applies)
 - Typeset or logo placement
 - Additional charges (additional color; 2nd side, foil, special pack, etc.)
 - Order quantity
 - Shipping method (our standard=Ground)
 - Requested ship and/or in-hands date
- Production will begin after completed purchase order has been received (with all above information) and proof(s) have been approved.

SHIPPING All pertinent shipping, special packaging, special labeling and ship-to addresses must be supplied at the onset of the order. Orders will not be released to production if special packaging or labeling information has not been provided. Additional charges will apply if changes are made once the order is in production. U.S. Postal Service: \$31.25 (v) processing fee per shipment. Handling charge: \$7.50 (v) per shipment.

SPLIT SHIPMENTS: \$10.00 (v) per location after the first location. (Full cases only) Petite Line Products Only - call for details on all other products.

CHANGE IN SHIPPING REQUIREMENTS: A change in shipping address, method, quantity etc. can be made on orders 72 hours in advance of the shipment at no charge. We are not able to accommodate same-day changes to shipping requirements.

TK CUPS-SORG'S GRANDE & FLEXOGRAPHIC LINES:

All orders are shipped F. O. B. point of manufacture, and are shipped in the most economical method available, unless a specific method is requested.

LIGHTNING RUSHES: Your Purchase Order must contain complete and accurate information including price, product and shipping details in order to be considered a lightning rush. Lightning rush art must be ready to print and fall within our Art Guidelines. Your proof will be automatically waived. Our website contains templates for each product that may be useful to you.

WAIVED PROOFS: By submitting a lightning rush or other order with a waived proof you acknowledge that we will not alter your art and that your art file complies with our Art Guidelines and limitations. Some of our published disclaimers may apply.

ARTWORK FEES:

-Non stock clip art research fee: \$25.00 (v) per image.
-Redraw logo/convert to vector art: \$80.00 (v) per hour.
In order not to delay your order, we will automatically make minor necessary adjustments to your artwork for a fee of \$20.00 (v) for up to fifteen minutes of artist's time on your project. This charge will be applied automatically to your bill. Examples of necessary revisions may include (removing effects, alterations to original art, etc). For any adjustments that will take longer than fifteen minutes, we will contact you for pre-approval. Our graphic services rate is \$80.00 (v).

ORDER CANCELLATION FEE \$37.50 (v), plus all costs incurred through date factory receives cancellation notice. Order cancellations must be in writing.

BLANK PRICING Petite line items only. EQP less 10%.

PAPER PROOFS: No cost on all products. Lead-time is approximately 24 hours after receipt of artwork and purchase order. Proof will be received within 24 hours of receipt of the order acknowledgement. Additional charge of \$25.00 (v) for each revision after the second proof.

VIRTUAL PROOFS: \$25.00 (v) for virtual proof + 1 revision. All additional revisions will be \$15 (v).

INK DRAW DOWN (used for color match) \$31.25 (v) actual PMS color ink is rolled onto substrate. Artwork is not used for this process.

TK CUPS-SORG'S PETITE LINE: PRODUCTION PROOFS: \$25.00 (v) per color, plus any applicable set-up charges. 5-day lead time is required.

TK CUPS-SORG'S GRANDE & FLEXOGRAPHIC LINES:

PRODUCTION PROOFS: (See product page for availability)

NAPKINS: \$400.00 (z) plus applicable set-up charges.

CHROMALIN PROOFS (color correct) Available on some products.

\$475.00(z) Per Proof + each revision.

COLOR KEY PROOF Color separated acetate with template layout. Not available on all products. \$475.00(z) Per Proof + each revision.

PRODUCTION 4-COLOR PROCESS PRINTING:

Available on all TK Cups-Sorg's Flexographic Line & only on Grande Line 2 or 3ply White Napkin products. Please call for details. All 4-color process imprints require a Chromalin/watercolor/pre-production proof to match at press. All final proofs must be returned to the factory to match at press.

PRINTING PLATES WITH REPEAT ORDERS: Printing plates are re-useable for a period of 2 years. Repeat orders produced within that 2 year period will not incur set-up charges.

TK CUPS-SORG'S PETITE LINE: All orders produced to quantity ordered with the exception of products being out of stock.

TK CUPS-SORG'S GRANDE & FLEXOGRAPHIC LINES:

TK Cups-Sorg's adheres to print industry standards of +/- 10% over/under runs. All orders are produced in full case quantities only.

SPECIAL PACKAGING/LABELING In some cases special package counts may be approximate as the product is weighed, not counted.

-NAPKINS:

(Orders of 10M minimum) Minimum package count is 16 count, 16-100 ct. packages. Call for quote.

-ALL OTHER PRODUCTS:

Special packaging charges will be quoted per request. Please call for details.

-SPECIAL LABELS - Quoted by request.

-CUSTOM CASE PACK - Quoted per job.

PRODUCT SUBSTITUTIONS Factory reserves the right to substitute our products with one of a similar design and function. Notice may or may not be given at factories discretion.

DAMAGED/SHORTED ITEMS Before leaving the factory, every order is inspected at least twice for quality, breakage, appearance and correct count. It is recommended that ALL packages be inspected for proper count, colors & sizes immediately upon delivery. In the event of shortages, our factory must be notified immediately. Shortages or factory errors will be replaced or a credit will be issued by the factory within 30 days following the initial delivery. Claims for damaged or lost shipments must be filed with the freight carrier. Factory will NOT BE responsible for merchandise lost, damaged, or delayed by the freight carrier.

RETURNED/REFUSED ITEMS Custom imprinted items are not returnable or refundable for credit unless there is a factory error. Factory must be notified immediately if a shipment is refused or returned for any reason. No unauthorized return shipment will be accepted. Customer will be invoiced for freight charges incurred for unauthorized return shipments.

STOCK INK COLOR & COLOR MATCHING INFORMATION:

PMS (PANTONE) INK MATCH: \$25.00(v) per order.

There is no extra charge for using inks from our list of stock ink colors.

METALLIC INKS: (charge applies)



Metallic gold 871 U through Metallic silver 877 U is available. Please contact us for pricing on specialty metallic inks.

EXCESSIVE INK CHARGE:

\$5.00/M (v). Disclaimer may apply for ink rub-off.

GEMINI

GEMINI LINE

www.geminiindustries.com



Air Fresheners



Floating Keytainers



Luggage Tags



Magnets



Key Tags



Decals



Handy Huggers



Ribbons

TK SORG'S
EAT! DRINK! BRAND!™
TKCups-Sorgs.com
A Division of Gemini Industries LLC

PPAI
The Mark of a Professional®
114089

PROMOTION PRODUCTS
ASI
INFORMATION CENTER
88200

SAGE®
57390

WE SUPPORT STANDARDS
sm@rt
TO IMPROVE ARTWORK READINESS

tkcups-sorgs.com